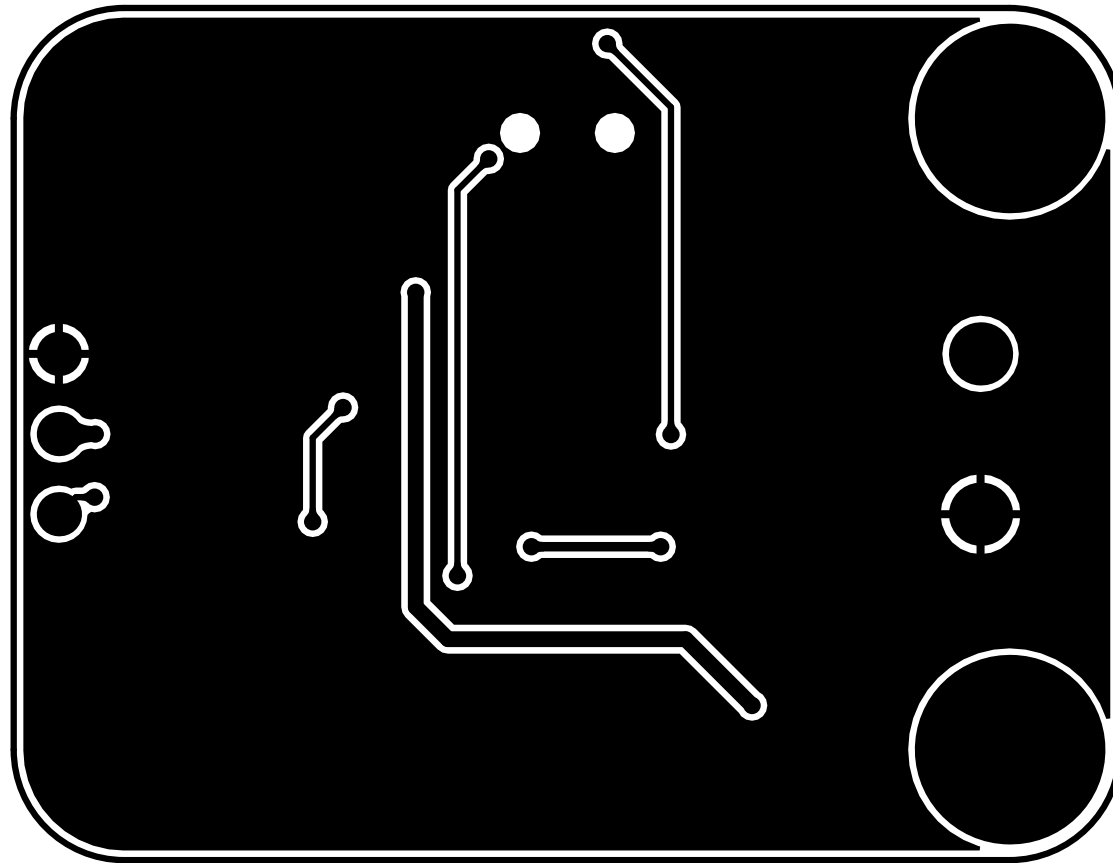
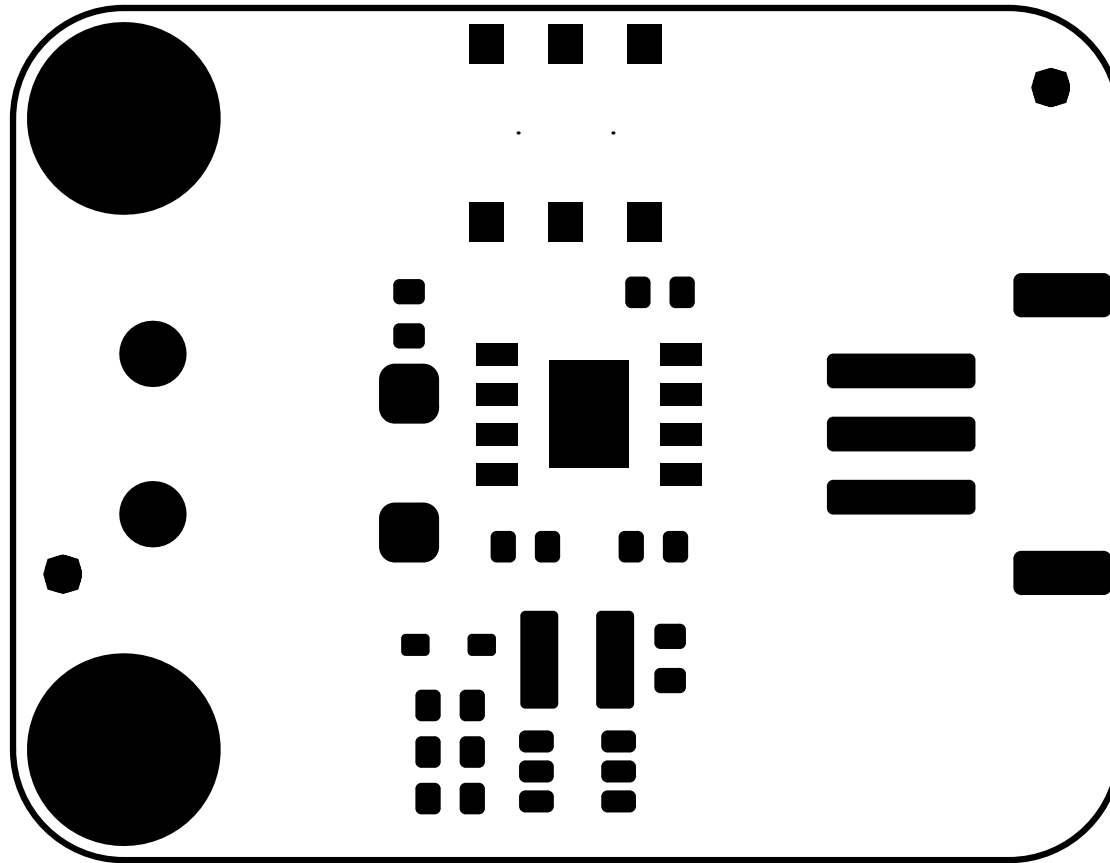


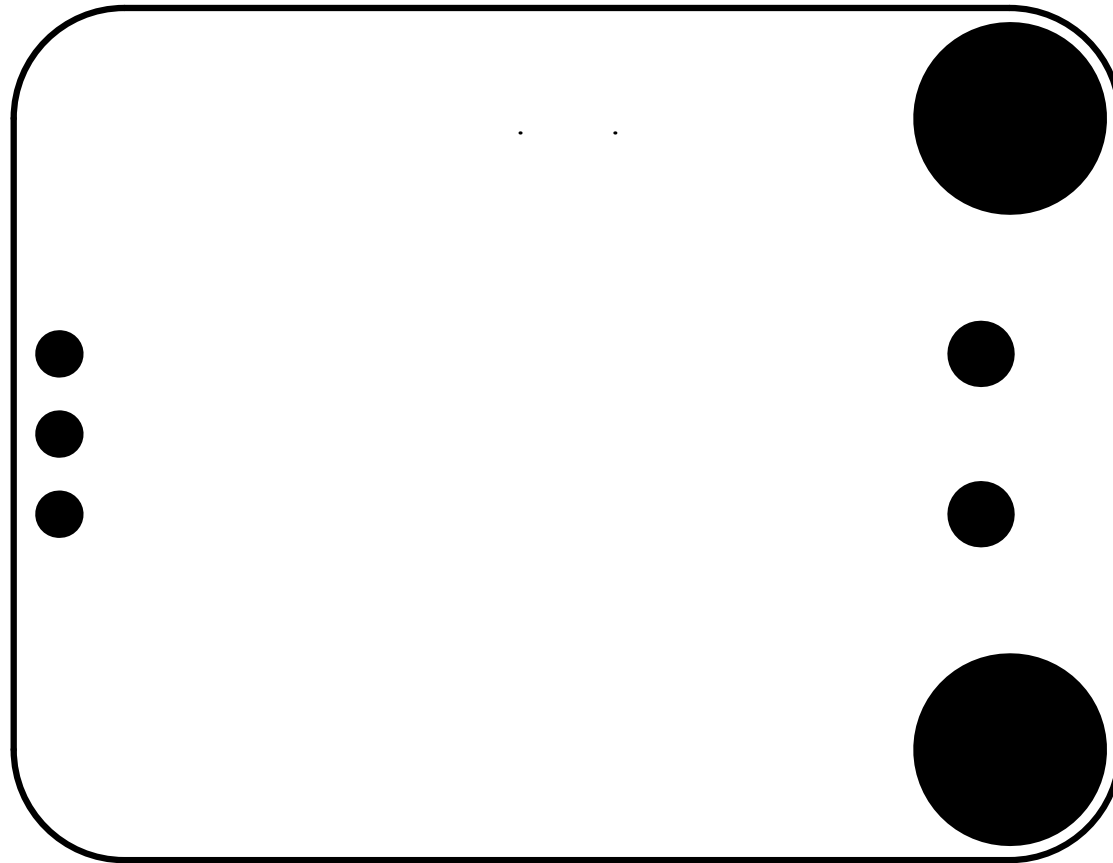
| | | |
|------------------------|------------------------|--------------------------|
| PCB Information | Name:[DFR1036](V1.0.0) | Thickness: 1.6mm |
| Engineer:Aaron | Top SolderMask: Black | Bottom SolderMask: Black |
| Date: 20230718 | Top Silkscreen: White | Bottom Silkscreen: White |



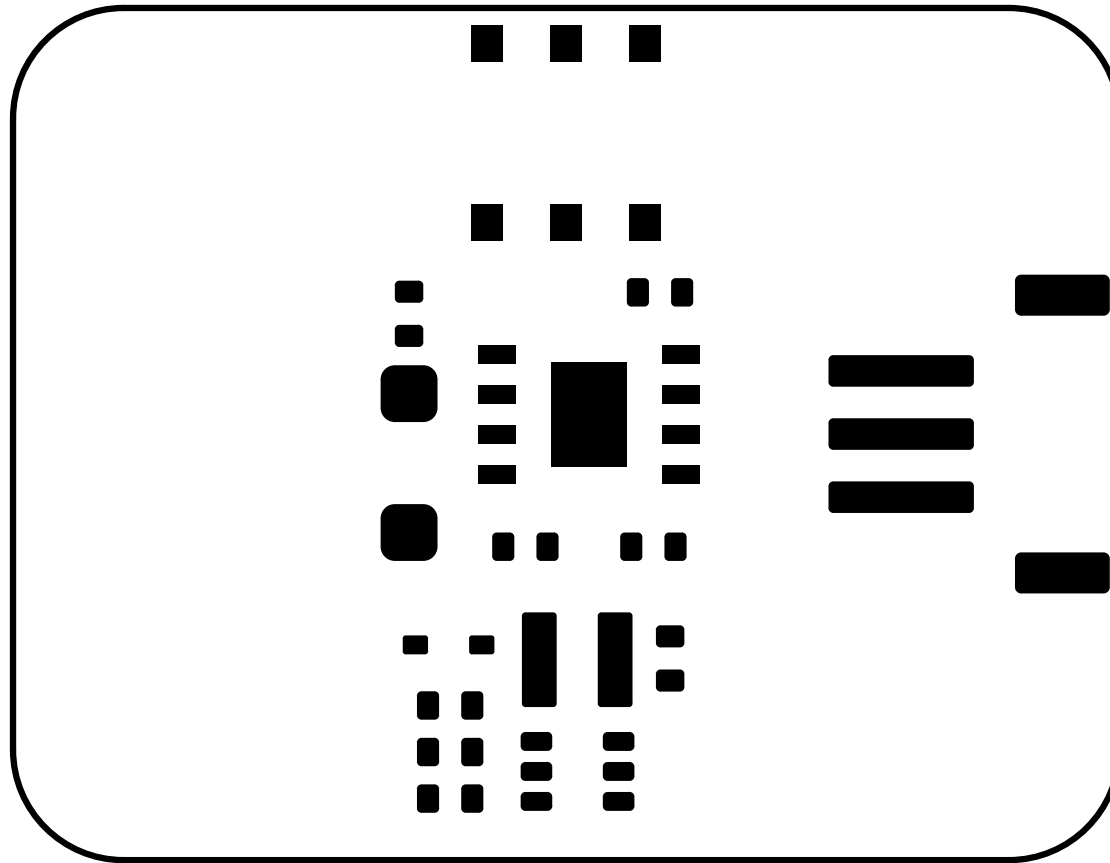
| | | |
|------------------------|------------------------|--------------------------|
| PCB Information | Name:[DFR1036](V1.0.0) | Thickness: 1.6mm |
| Engineer:Aaron | Top SolderMask: Black | Bottom SolderMask: Black |
| Date: 20230718 | Top Silkscreen: White | Bottom Silkscreen: White |



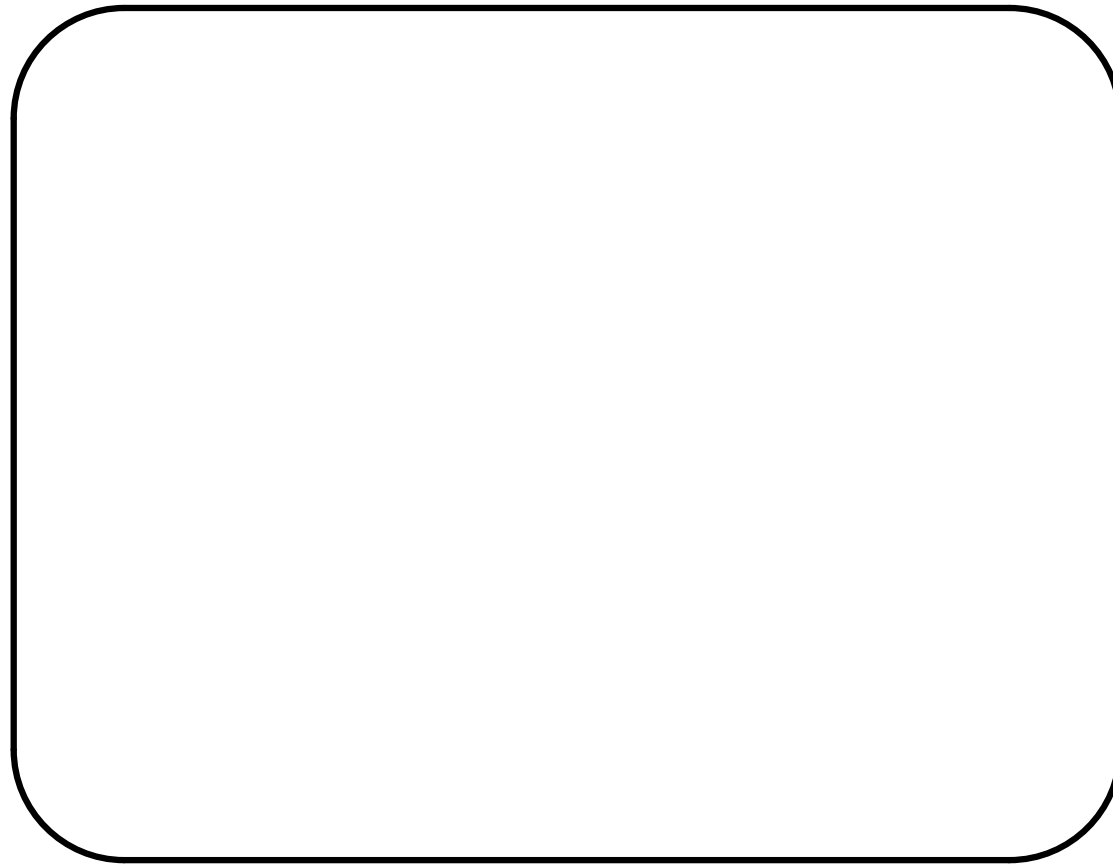
| | | |
|------------------------|------------------------|--------------------------|
| PCB Information | Name:[DFR1036](V1.0.0) | Thickness: 1.6mm |
| Engineer:Aaron | Top SolderMask: Black | Bottom SolderMask: Black |
| Date: 20230718 | Top Silkscreen: White | Bottom Silkscreen: White |



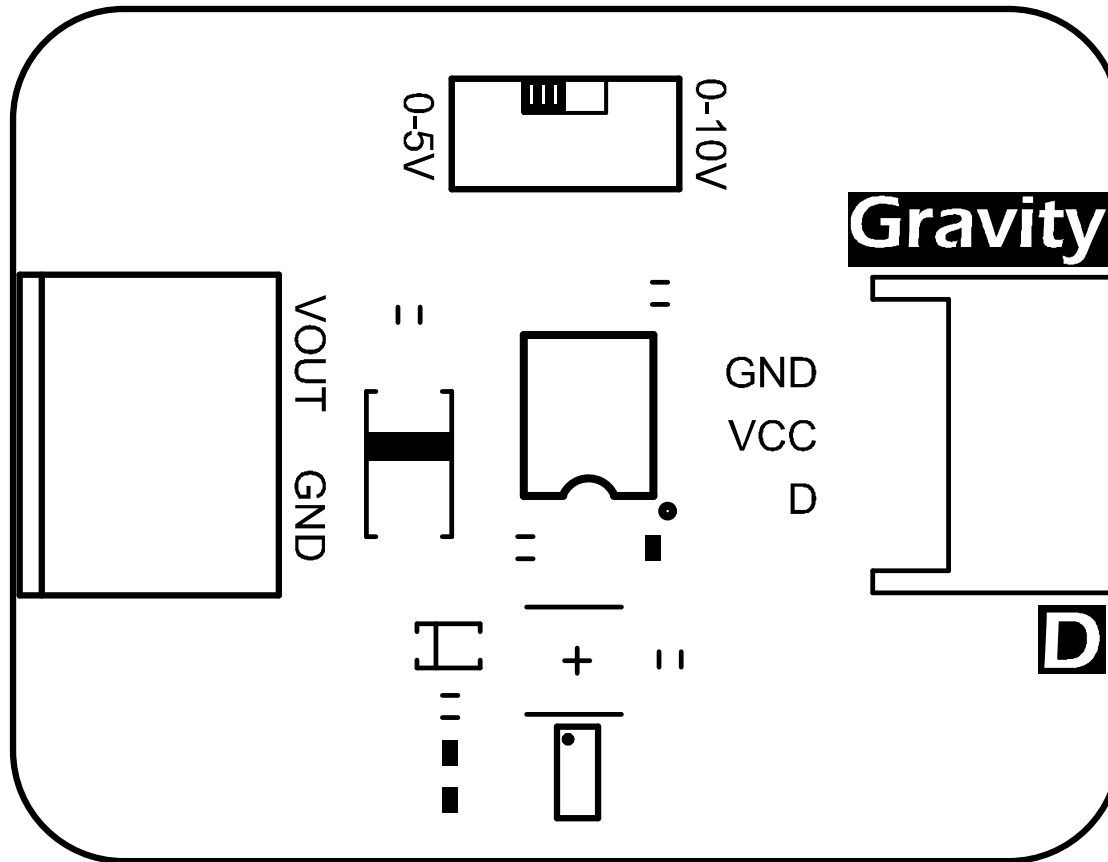
| | | |
|------------------------|------------------------|--------------------------|
| PCB Information | Name:[DFR1036](V1.0.0) | Thickness: 1.6mm |
| Engineer:Aaron | Top SolderMask: Black | Bottom SolderMask: Black |
| Date: 20230718 | Top Silkscreen: White | Bottom Silkscreen: White |



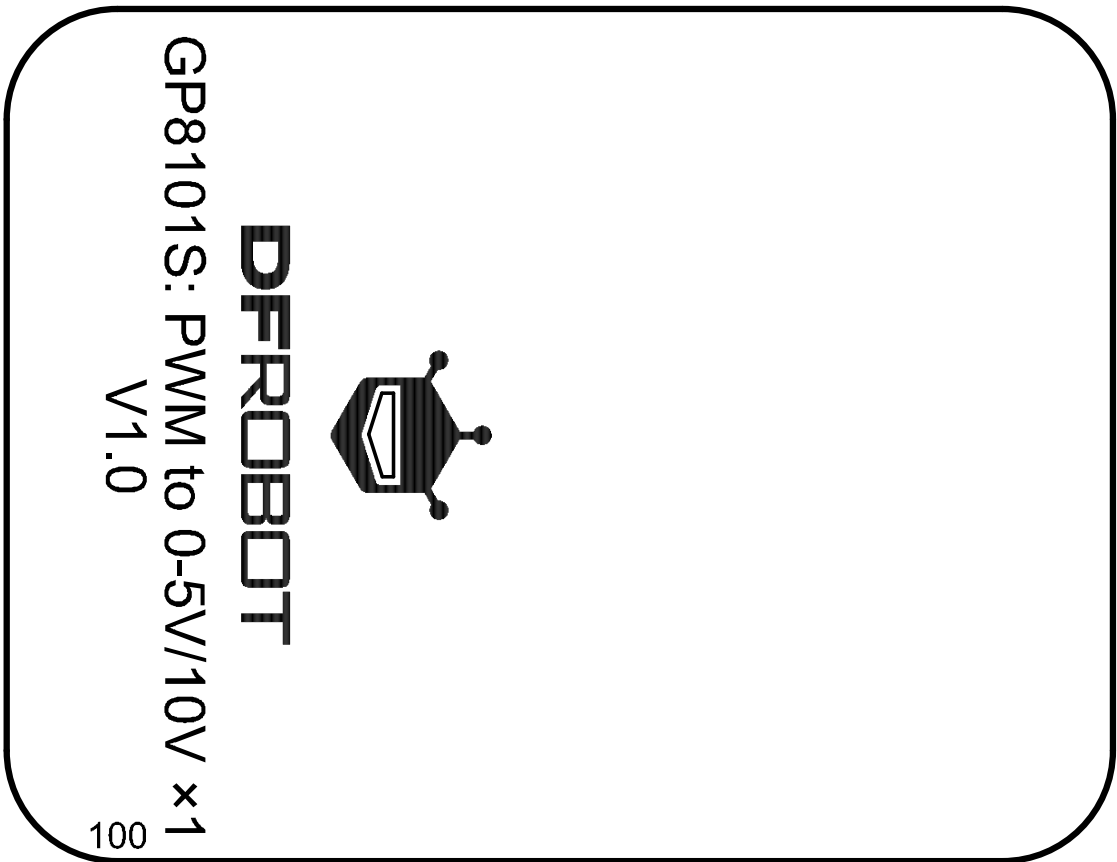
| | | |
|------------------------|------------------------|--------------------------|
| PCB Information | Name:[DFR1036](V1.0.0) | Thickness: 1.6mm |
| Engineer:Aaron | Top SolderMask: Black | Bottom SolderMask: Black |
| Date: 20230718 | Top Silkscreen: White | Bottom Silkscreen: White |



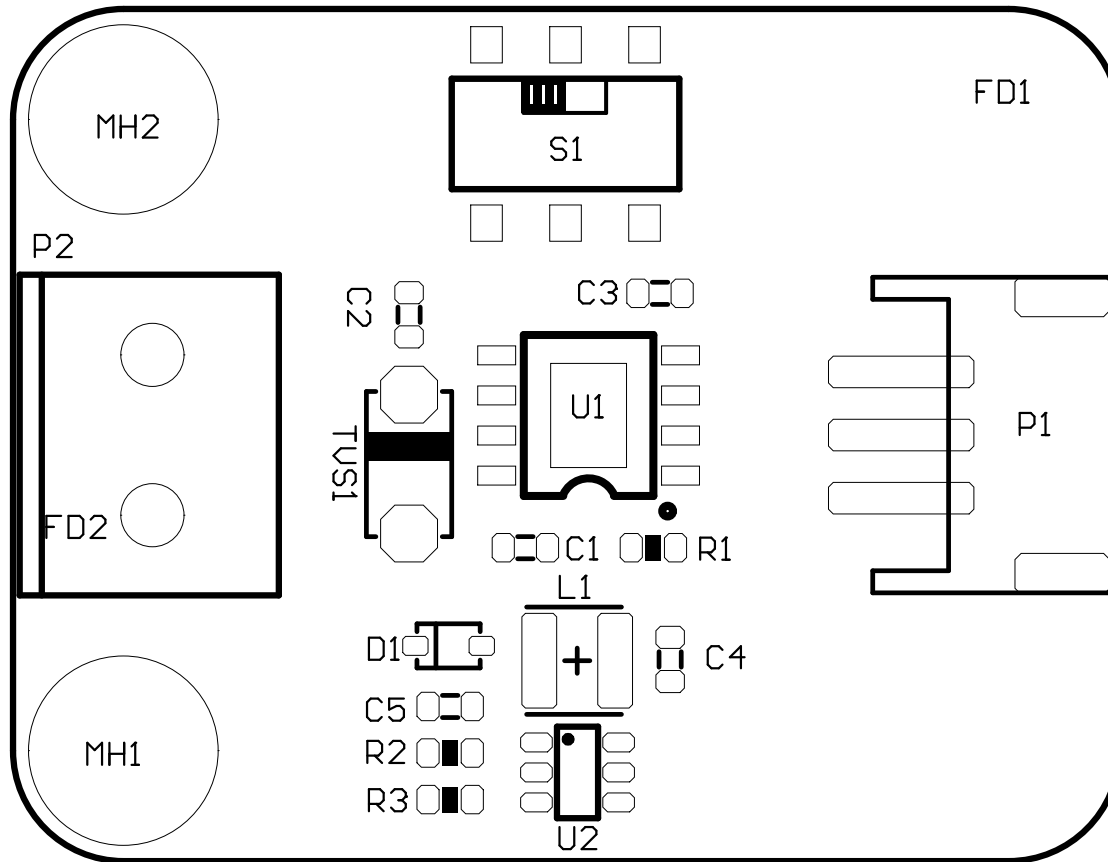
| | | |
|------------------------|------------------------|--------------------------|
| PCB Information | Name:[DFR1036](V1.0.0) | Thickness: 1.6mm |
| Engineer:Aaron | Top SolderMask: Black | Bottom SolderMask: Black |
| Date: 20230718 | Top Silkscreen: White | Bottom Silkscreen: White |



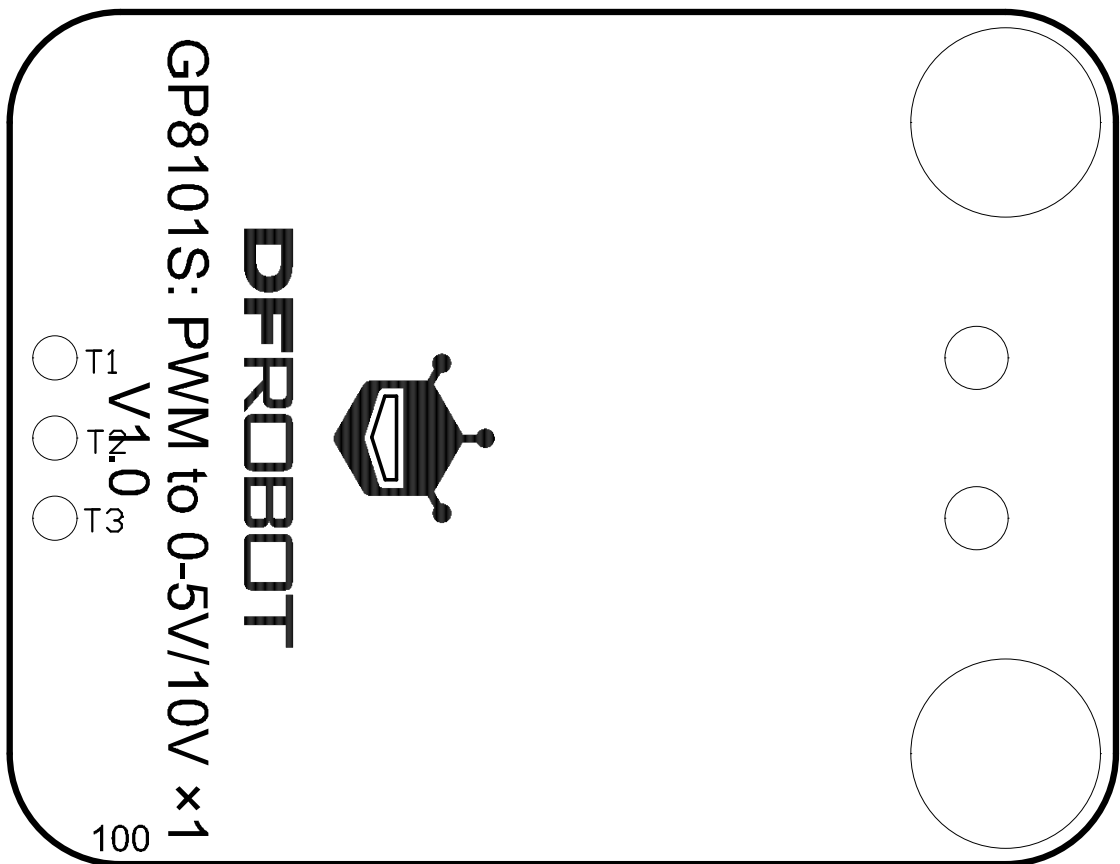
| | | |
|------------------------|------------------------|--------------------------|
| PCB Information | Name:[DFR1036](V1.0.0) | Thickness: 1.6mm |
| Engineer:Aaron | Top SolderMask: Black | Bottom SolderMask: Black |
| Date: 20230718 | Top Silkscreen: White | Bottom Silkscreen: White |



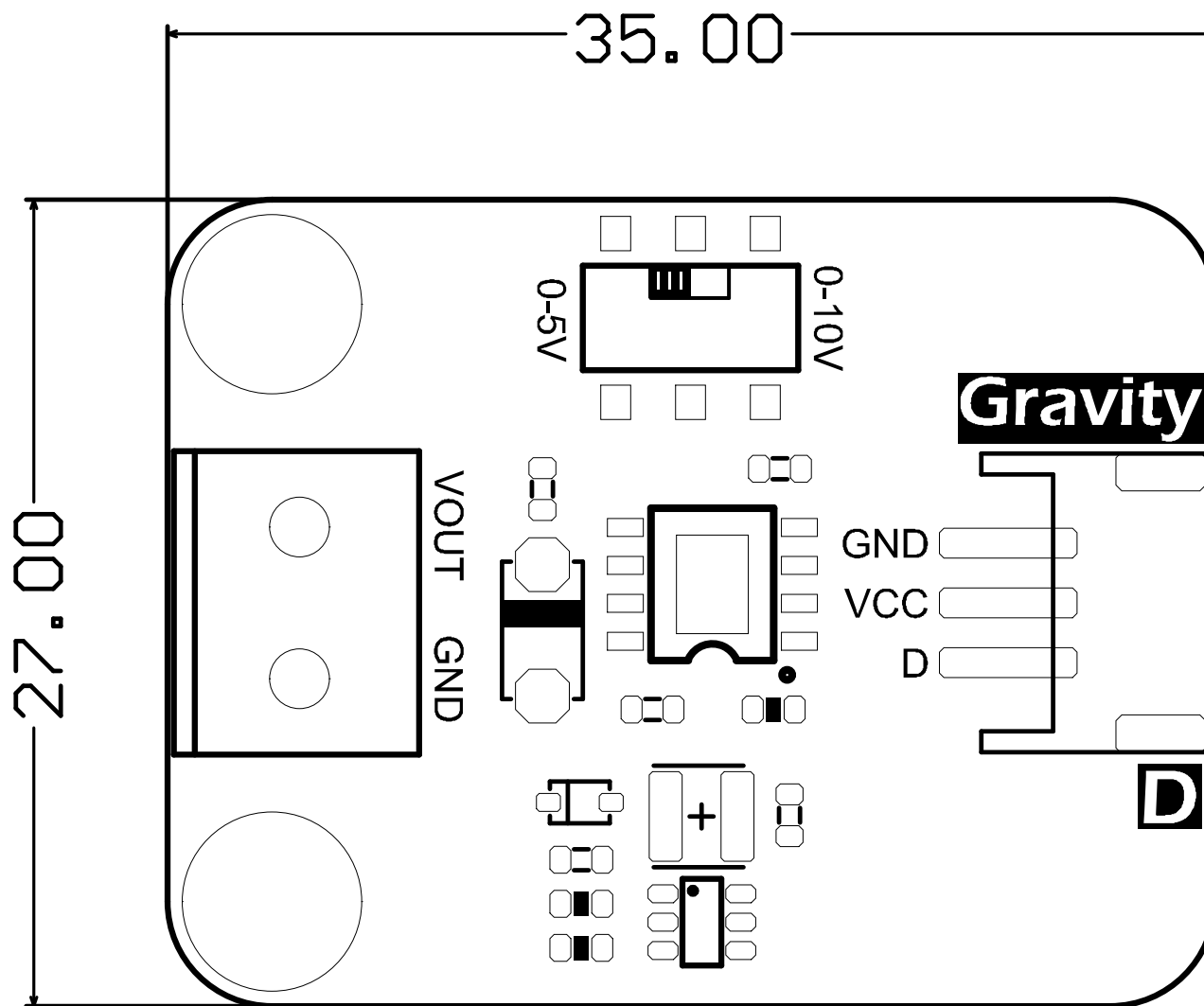
| | | |
|------------------------|------------------------|--------------------------|
| PCB Information | Name:[DFR1036](V1.0.0) | Thickness: 1.6mm |
| Engineer:Aaron | Top SolderMask: Black | Bottom SolderMask: Black |
| Date: 20230718 | Top Silkscreen: White | Bottom Silkscreen: White |



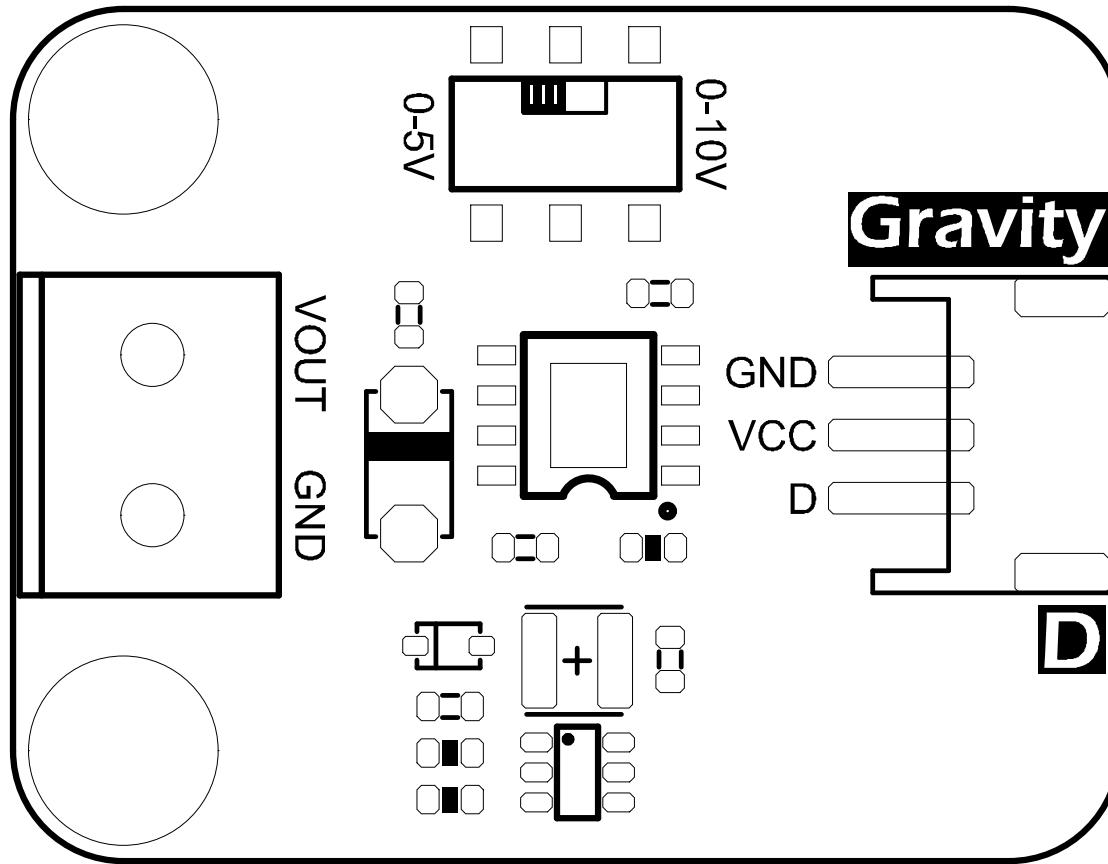
| | | |
|------------------------|------------------------|--------------------------|
| PCB Information | Name:[DFR1036](V1.0.0) | Thickness: 1.6mm |
| Engineer:Aaron | Top SolderMask: Black | Bottom SolderMask: Black |
| Date: 20230718 | Top Silkscreen: White | Bottom Silkscreen: White |



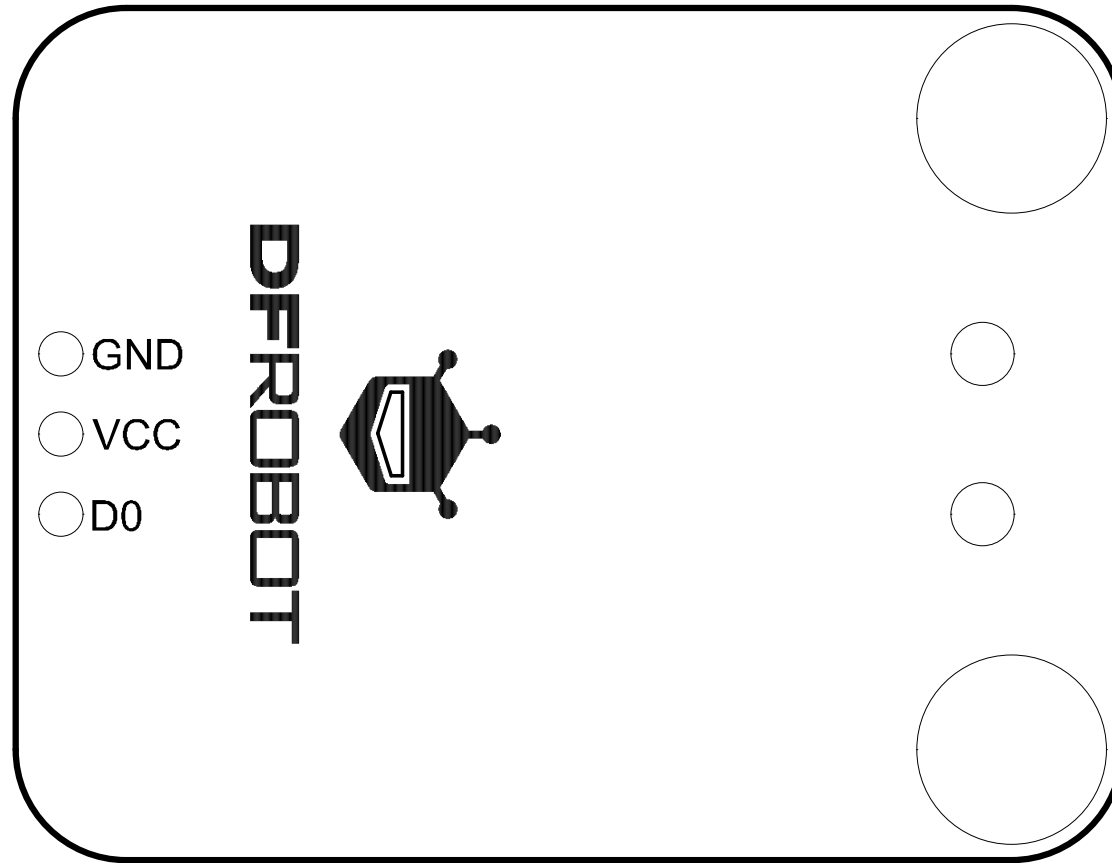
| | | |
|------------------------|------------------------|--------------------------|
| PCB Information | Name:[DFR1036](V1.0.0) | Thickness: 1.6mm |
| Engineer:Aaron | Top SolderMask: Black | Bottom SolderMask: Black |
| Date: 20230718 | Top Silkscreen: White | Bottom Silkscreen: White |



| | | |
|------------------------|------------------------|--------------------------|
| PCB Information | Name:[DFR1036](V1.0.0) | Thickness: 1.6mm |
| Engineer:Aaron | Top SolderMask: Black | Bottom SolderMask: Black |
| Date: 20230718 | Top Silkscreen: White | Bottom Silkscreen: White |



| | | |
|------------------------|------------------------|--------------------------|
| PCB Information | Name:[DFR1036](V1.0.0) | Thickness: 1.6mm |
| Engineer:Aaron | Top SolderMask: Black | Bottom SolderMask: Black |
| Date: 20230718 | Top Silkscreen: White | Bottom Silkscreen: White |



| | | |
|------------------------|------------------------|--------------------------|
| PCB Information | Name:[DFR1036](V1.0.0) | Thickness: 1.6mm |
| Engineer:Aaron | Top SolderMask: Black | Bottom SolderMask: Black |
| Date: 20230718 | Top Silkscreen: White | Bottom Silkscreen: White |