

Contents

Instructions for USB Tester with Full Colour Display 1-5

The PC Control Software Installation Instruction 6-15

UM24C Android APP Instruction 16-19

Instructions for USB Tester with Full Colour Display

-Model: UM24/UM24C

Dear Customer,

Thank you for purchasing this Full Colour USB Tester from Hangzhou Ruideng Technologies Co., Ltd. Prior to using this product we recommended that you briefly familiarize yourself with these instructions. In order to ensure the correct operation and use of the device. We also advise that you keep these instructions in a safe place for future reference as may be needed.



Technical Parameters:

Model: UM24 /UM24C	Product weight:20.75g
Voltage measurement range: 4.50-24.00V	Voltage measurement resolution: 0.01V
Current measurement range: 0.000-3.000A	Current measurement resolution: 0.001A
Capacity accumulation range: 0-99999mAh	Voltage measurement accuracy: ± (0.2% + 1digit)
Energy accumulation range: 0-99999mWh	Current measurement accuracy: ±(0.8%+3 digits)
Load impedance range: 1.5-9999.9Ω	Time measurement range: 0-99h59min59s
Temperature range: -10°C~100°C/0°F~200°F	Temperature measurement error: ± 3°C / ± 6°F
Screen brightness setting: Levels 0-5	Auto screen off time: 1-9 minutes
Voltage graphing range: 04.5-24.0V	Current graphing range: 0.00A-3.00A
Dimensions: 71.2mmx31.8mmx11.3mm	Quick charge recognition mode: QC2.0 QC3.0
Display screen: 1.44 Inch color LCD display	Refresh rate: 2Hz

Function Interfaces



Measurement Main Interface



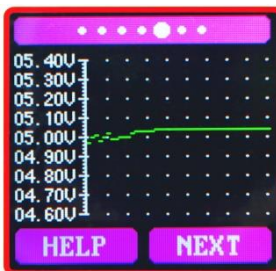
Quick Charge Recognition Interface



Data Recording Interface



Data Connection Cable Impedance Measurement Interface



Voltage Graphing Interface



Current Graphing interface



Settings Interface

Device Layout



- 1: Multifunction buttons (4)
- 2: Micro USB Port
- 3: USB A Male Port
- 4: USB A Female Port
- 5: 1.44 Inch Color LCD Screen
- 6: Bluetooth Indicator Light: When connected to the host computer control software, the Bluetooth indicator changes from flashing to steady state. When connecting, the Bluetooth icon is displayed on the screen. (Bluetooth communication version only).

Operating Instructions

When the unit is first powered on the welcome screen is displayed followed shortly by the main interface screen.

Hidden interface: Pressing any button whilst powering on the module will display three options. Option 1 selects the Chinese Interface and option 2 selects the English interface.



Hidden interface



Welcome interface

The third option is to zero the Current reading (Ensure there is no load connected to the unit). Holding the button will step through the 3 options. Release the button at the desired selection. Pressing and holding the button after stepping to the third option will exit the hidden interface.

Interface 1: Main Measurement Interface.

- 1: Voltage measurement.
- 2: Current measurement.
- 3: Accumulated Capacity.
- 4: Accumulated Energy.
- 5: Temperature.
- 6: Number of the Data Group in use.
- 7: Load equivalent impedance.
- 8: Power measurement.



Press the "Help" button to enter the interface as shown above:

Press and hold the "Next" button to switch Data Group. The USB tester can provide a total of 10 groups of data to save and view. These are numbered 0-9.

With Data Groups 1-9 selected the current mAh and mWh are saved after power off. They will continue accumulating the next time the tester is powered on. When the data group selected is 0 then the current value of mAh and mWh will be temporarily saved at power off. When the device is next powered on these values will be recalled and will begin flashing. When the accumulated mAh exceeds 1 mAh, the previous data will be cleared and accumulation will restart.

With a Data Group selected, press and hold the "Help" button to clear the mAh and mWh.

Press "Next" to switch to the Quick Charge Recognition Interface.

Interface 2: Quick Charge Recognition Interface.

- 9: D +: (DP) data positive signal level.
- 10: D -: (DM), data negative signal level.
- 11: Mode display: The product will automatically identify a device with a supported fast charging mode. At this time the device supports the QC2.0 and QC3.0 mode only.



Press "Next" to switch to the Data Recording Interface

Interface 3: Data Recording Interface

12: Time display: The total accumulated recording time.

13: Low Current trigger value.

REC: recording status indicator. 'REC' displayed in red indicates that recording is stopped. 'REC' displayed in green indicates that recording is in progress.



After power on, when the current flowing is greater than the Low Current trigger value. The system automatically begins to record the accumulated capacity, energy, and time elapsed. The 'REC' indicator will change from red to green.

To set the Low Current trigger value, press and hold the "Next" button to highlight the value then press the 'Next' button to adjust the value as required. The value can be set anywhere between 0.01A- and 0.30A. (10mA to 300mA).

Press "Next" button to switch to the Data Connection Cable impedance Measurement Interface.

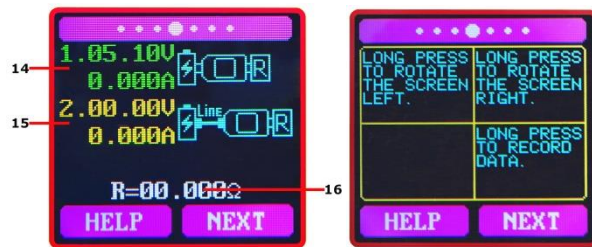
Interface 4: Data Connection Cable Impedance Measurement Interface.

The Tester can be used to measure the resistance of a data connection cable.

14: 1. USB Tester directly connected to the power supply with Voltage and Current values displayed.

15: 2.USB Tester connected via a data connection cable with Voltage and Current values displayed.

16: R: Data Connection Cable resistance.



Measurement procedure:

First, connect the USB Tester directly to the power supply and adjust the appropriate load current (recommended value 1A). Press and hold the "Next" button to begin recording data. The indicator prompt will stop flashing.

Second, unplug the USB Tester and then reconnect it to the power supply via the data connection cable and adjust the load current to the same value as in the first step. Press and hold the "Next" button to begin recording data. The indicator prompt stops flashing and the Data Connection Cable resistance measurement test is completed and the value displayed.

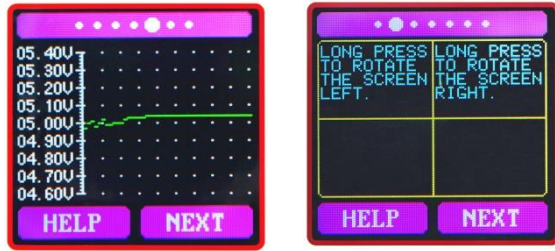
Note: If during the second step the screen turns black, this indicates that the voltage difference is too high and the tester will enter the 4.5V power-down state. The load current needs to be reduced. Then re-start the measurement from the first step. After the Data Connection Cable resistance test is completed, the Tester needs to be powered off and then on again to resume measurement.

Press the "Next" button to switch to the voltage graphing interface.

Interface 5: Voltage Graphing Interface.

This interface displays the voltage measurement over time in the 4.5V-24.0V range and will automatically adjust the displayed range in real time to account for voltage fluctuations.

Press the "Next" button to switch to the Current graphing interface.



Interface 6: Current graphing Interface.

This interface displays the Current measurement over time in the 0.00A-3.00A range and will automatically adjust the displayed range in real-time to account for Current fluctuations.

Press the "Next" button to switch to the Settings interface:



Interface 7: Settings Interface.

17: Auto screen off time

18: Screen brightness

19: Temperature display C /F

Press and hold the "Next" button to step through the options of auto screen off time,



brightness level and temperature display units. Stop on the value you wish to change then press the "Next" button to change the setting. For auto screen off time setting press 'Next' to repeatedly step through the 10 options from 0 to 9 minutes. For the screen brightness setting, press 'Next' to repeatedly step through the 6 options from 0 to 5 where 0 is the lowest brightness level and 5 is the highest. For the temperature display units, pressing the 'Next' button toggles the setting between C and F. To exit the Settings menu press and hold the 'Next' button.

The PC Control Software Installation Instruction

Note: This product only supports Windows 7 and above.

1 Unzip the installation package

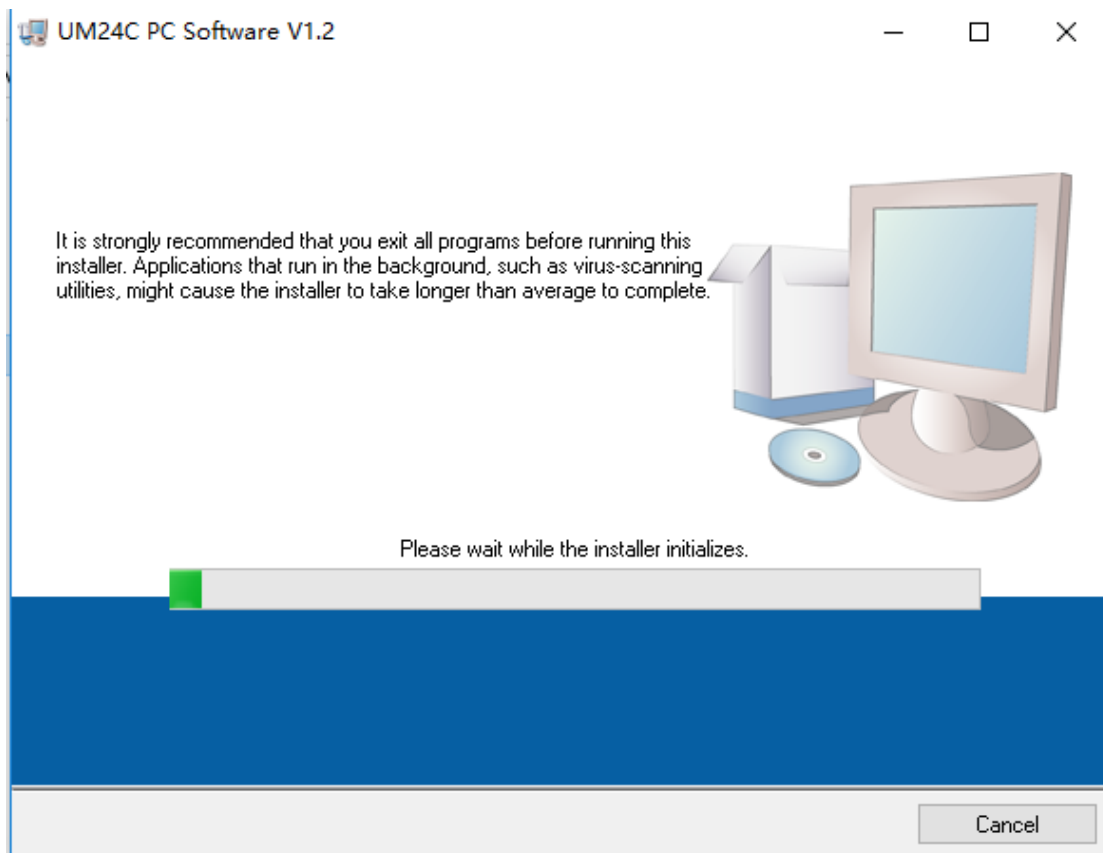
Note: Before unzip the installation package , please install the font package “Arial Unicode MS.ttf”.

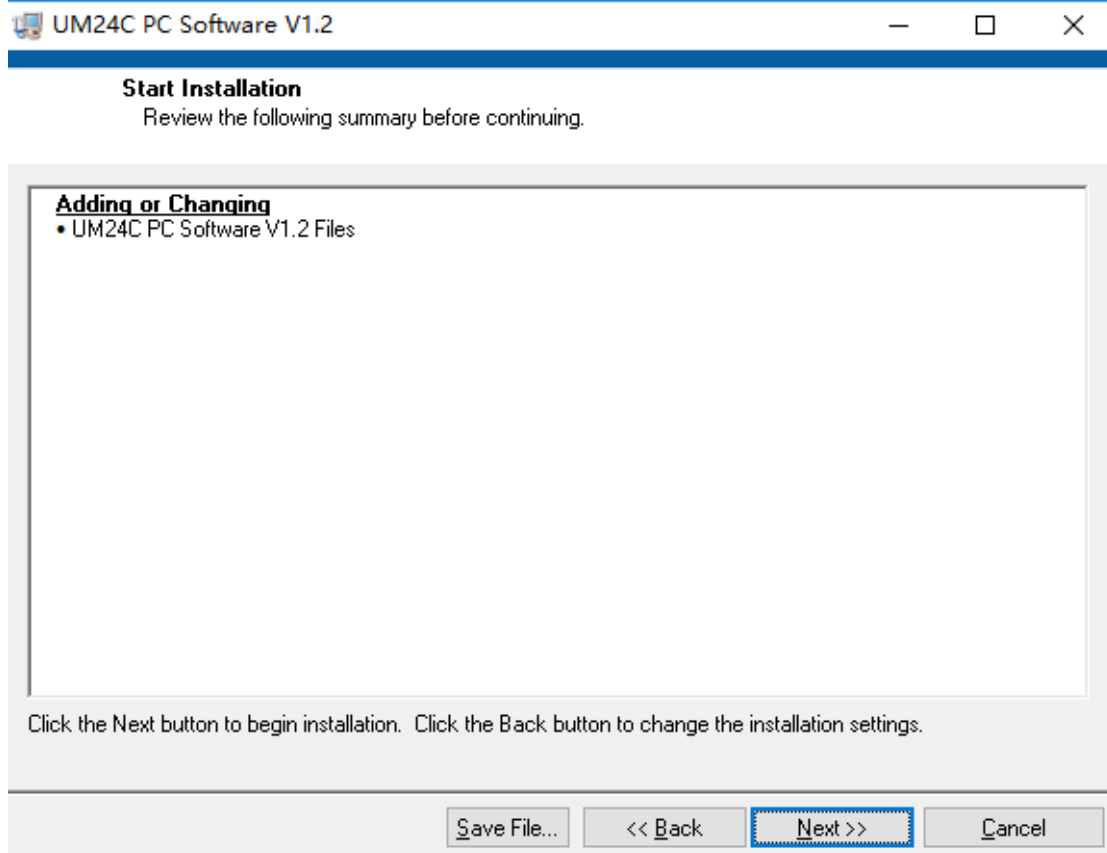
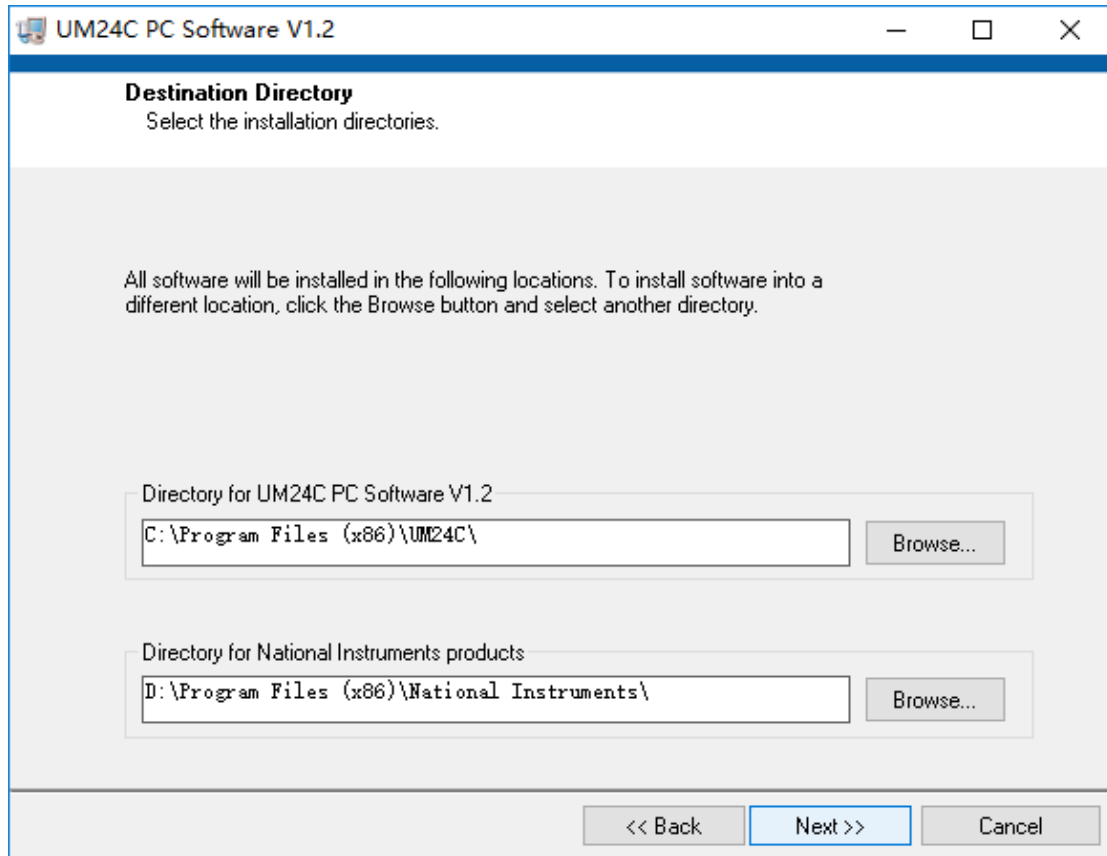
 Arial Unicode MS.ttf 2017/11/4 16:41 TrueType 字体文件 23,566 KB

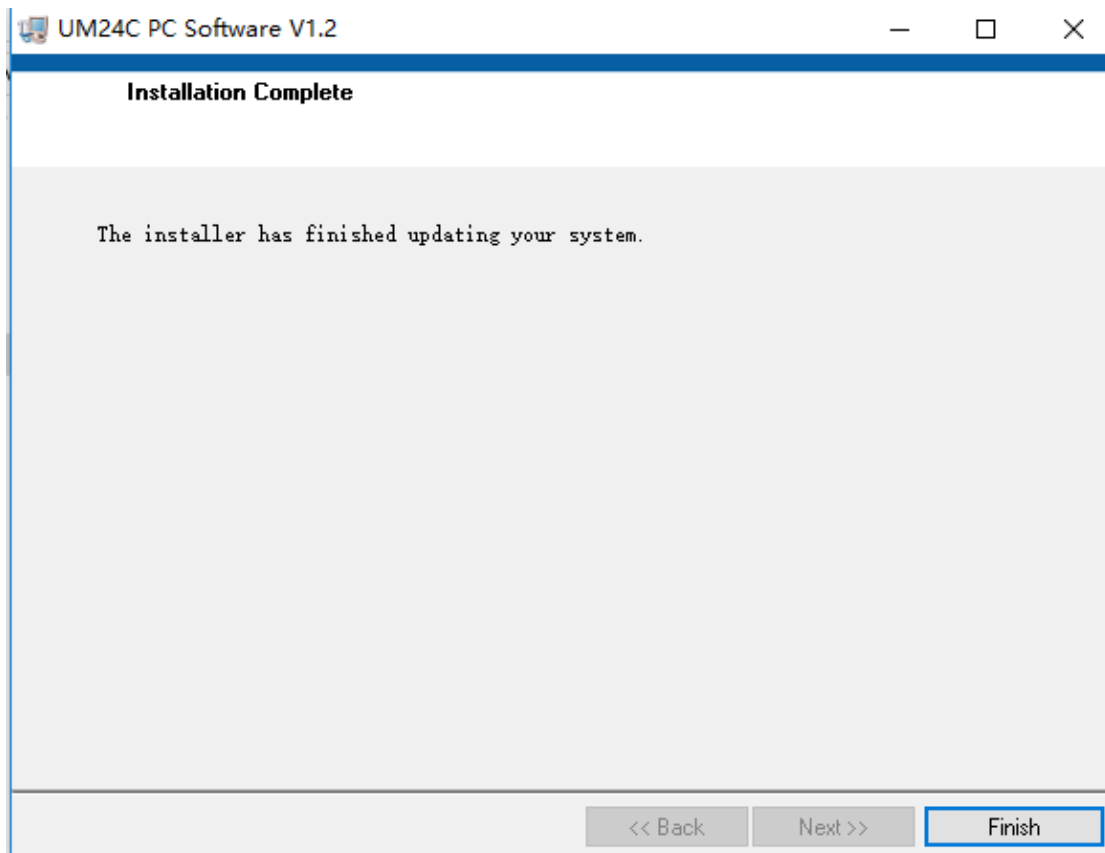
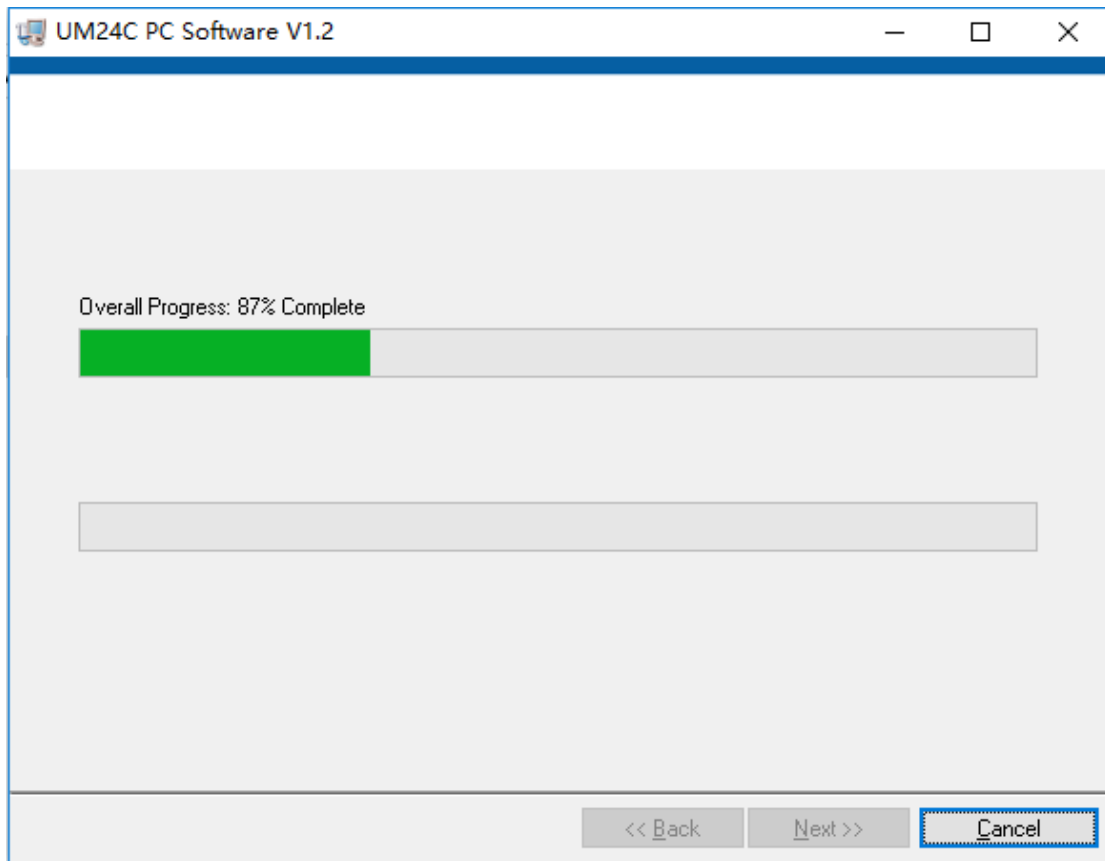
2 Click setup to install

电脑 > 新加卷 (E:) > UM24C PC Software V1.2

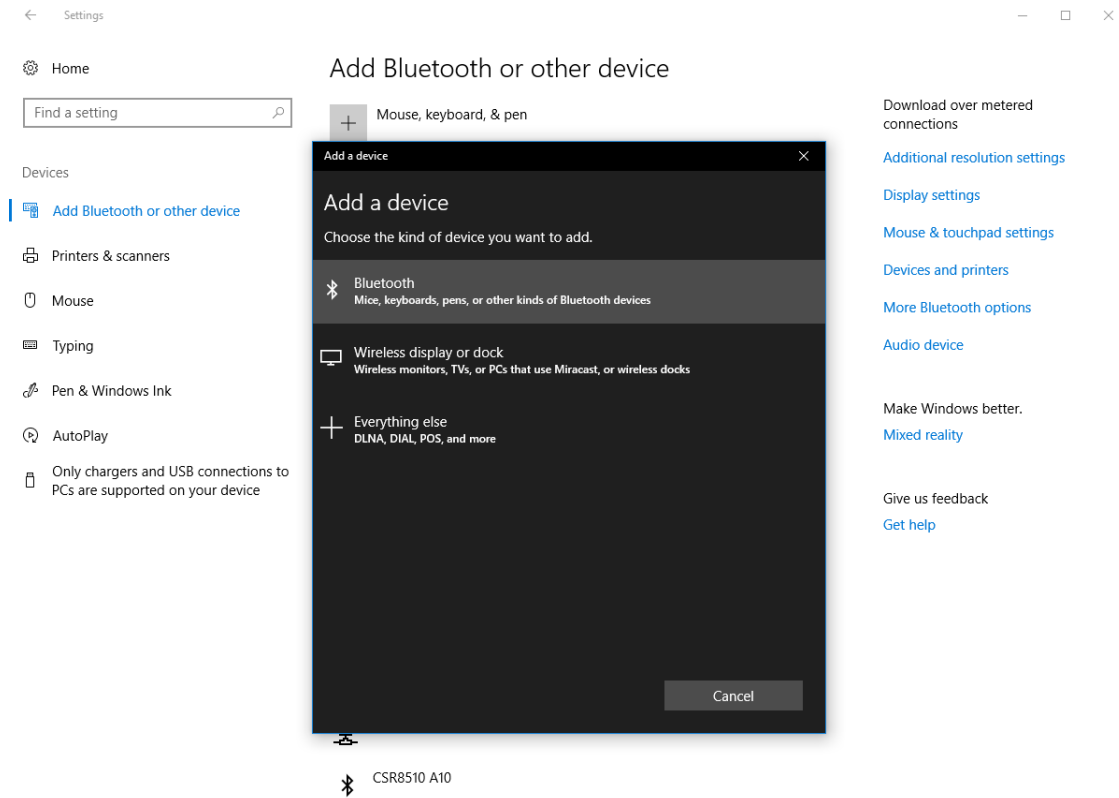
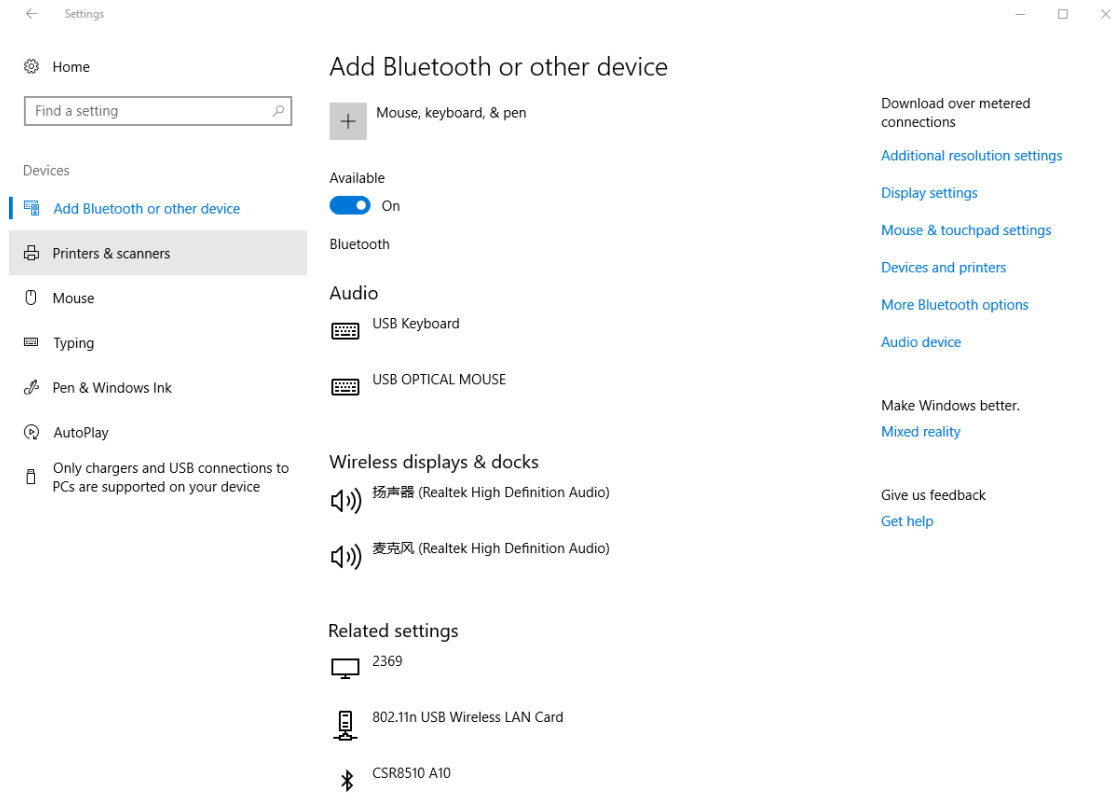
名称	修改日期	类型	大小
bin	12/12/2017 2:05...	文件夹	
license	12/12/2017 2:05...	文件夹	
supportfiles	12/12/2017 2:05...	文件夹	
nidist.id	12/12/2017 2:04...	ID 文件	1 KB
setup	6/7/2016 5:08 PM	应用程序	1,430 KB
setup	12/12/2017 2:04...	配置设置	24 KB

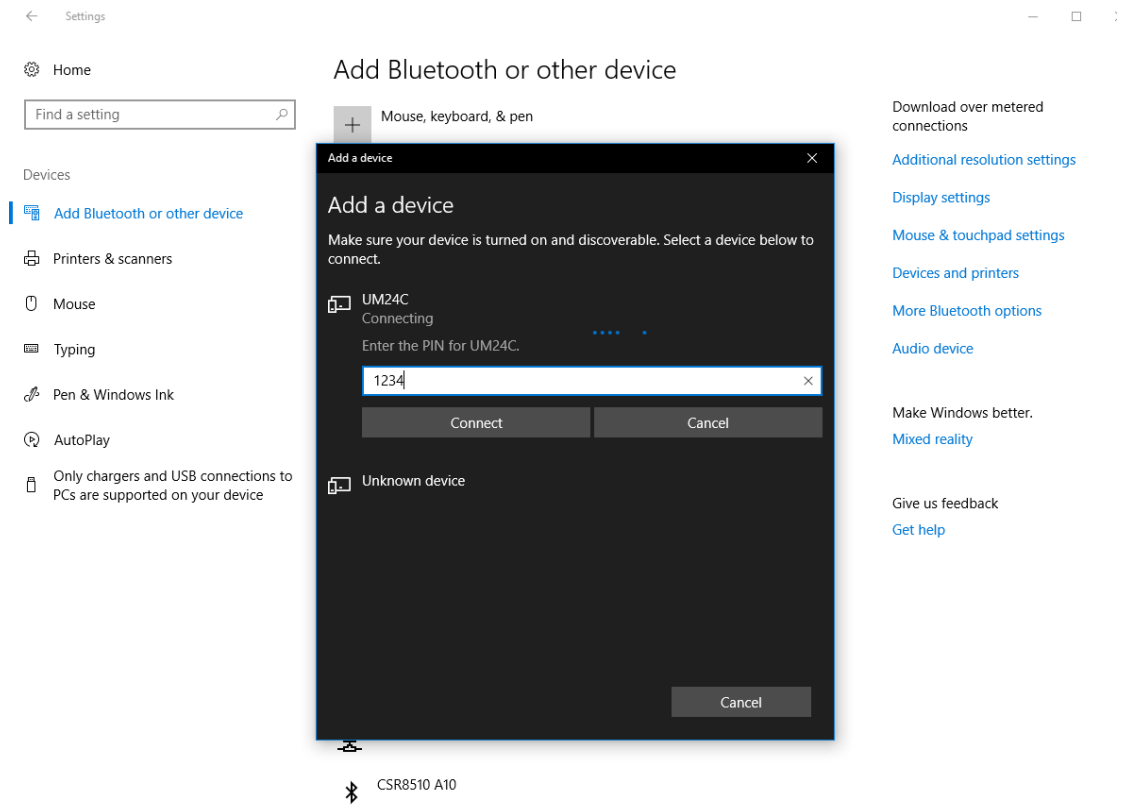
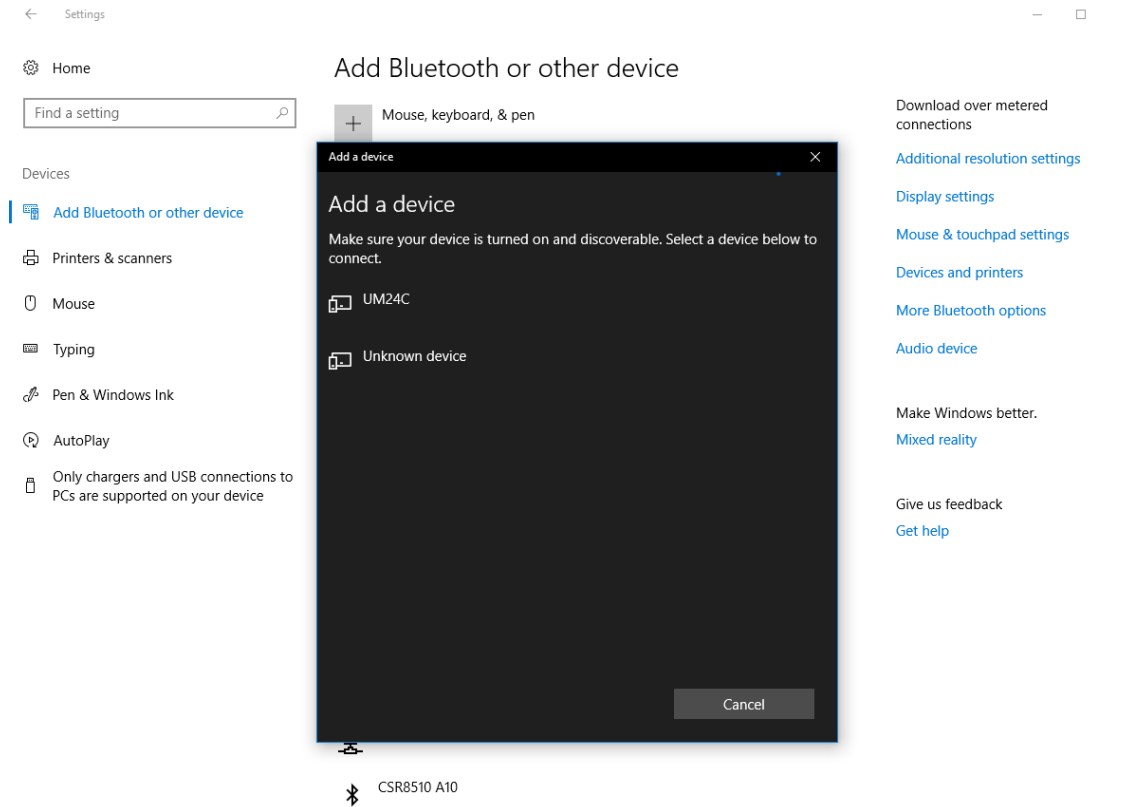




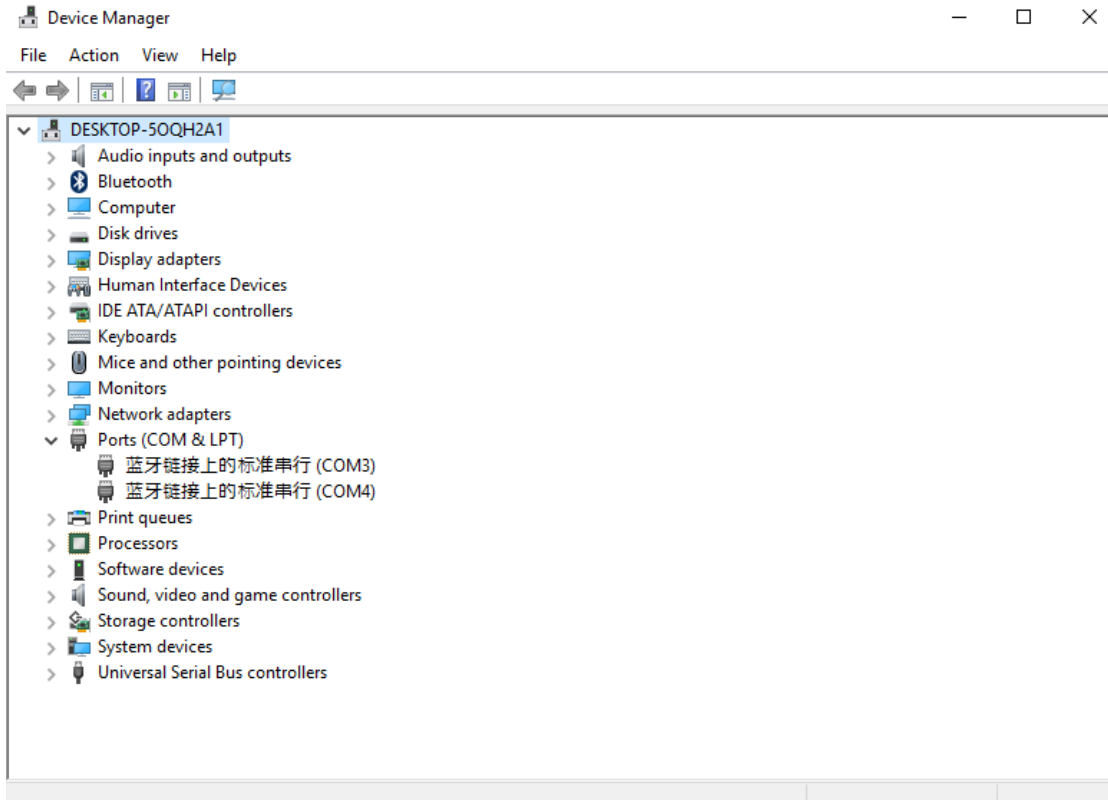


3 Bluetooth connection



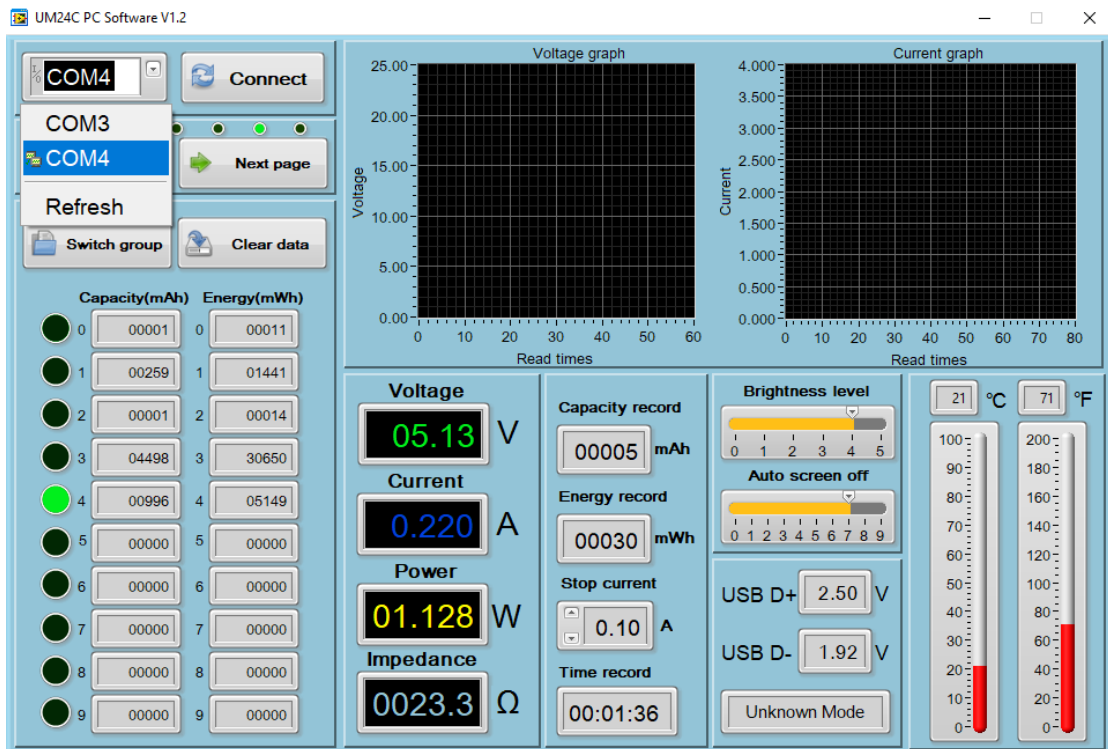


3.1 View device Manager

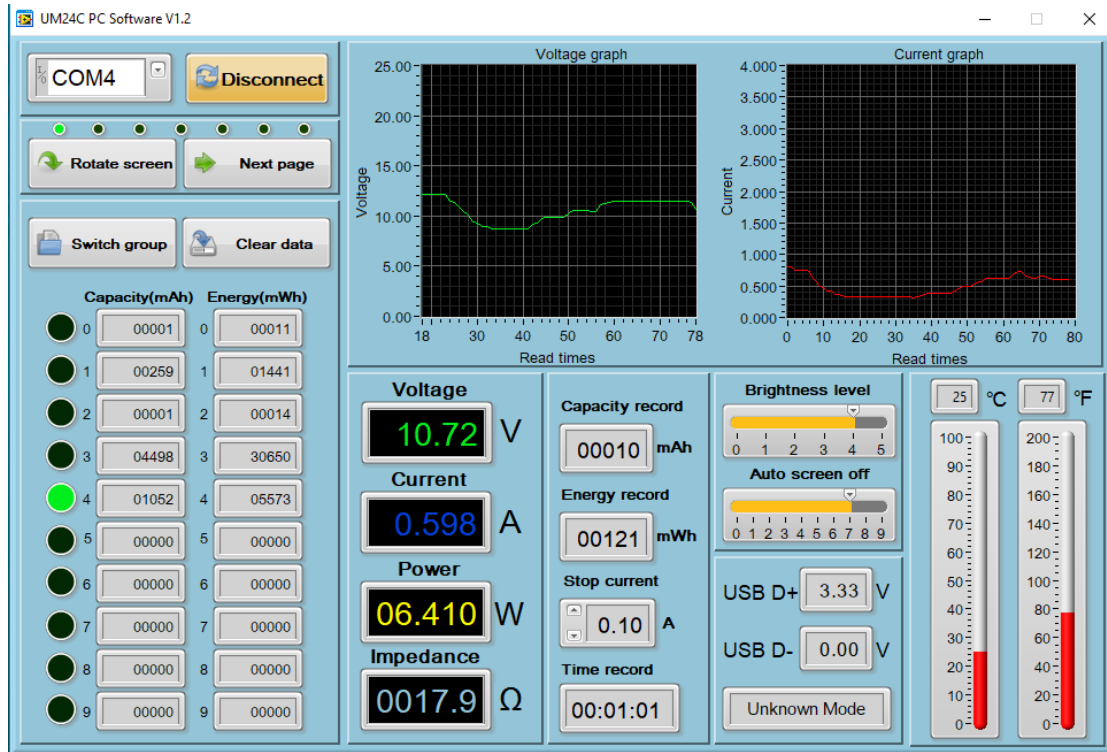


3.2 Connect bluetooth:

3.2.1 Bluetooth connection is successful; there will be two serial ports. Select the lower value port. Example, if the ports configured for Bluetooth are COM3 and COM4, then select COM3 for the connection. Or you right click bluetooth device to see the the attribute, there show the corresponding port number. You can select it.

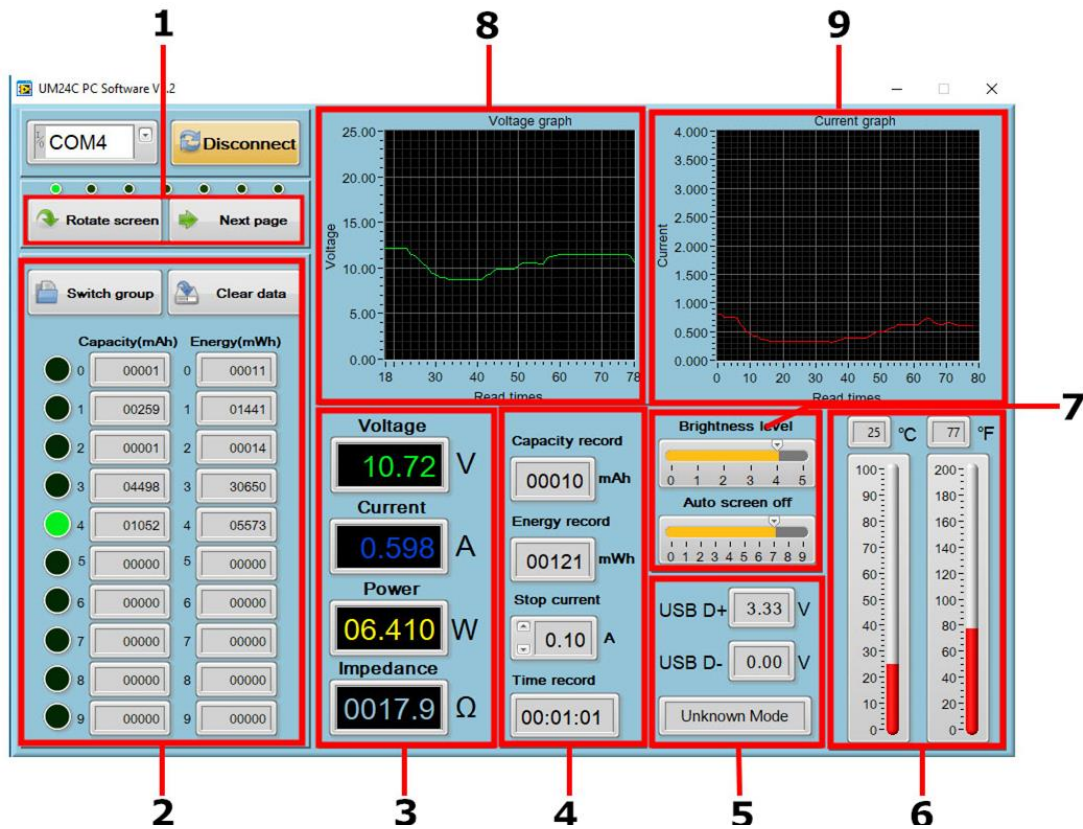


3.2.2 When the Bluetooth indicator changes from blinking to static, click “Connect”



4. Function Introduction

4.1 Program interface overview:



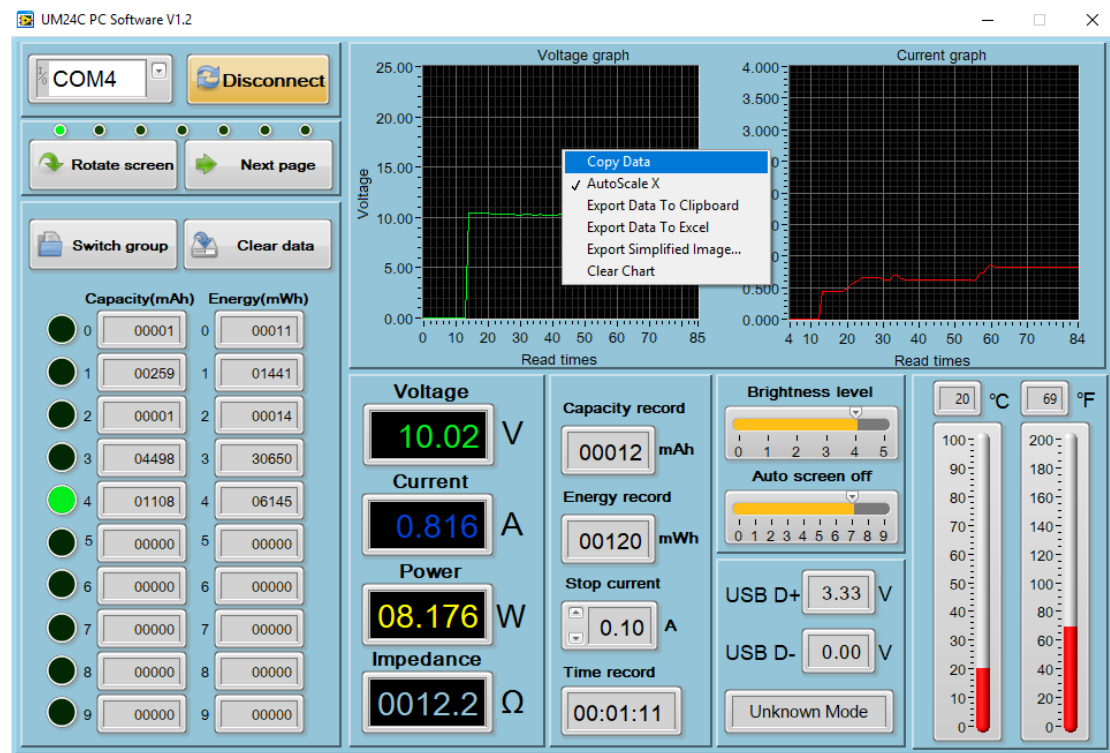
1: Basic functions: Rotate screen, Next pages

2: Corresponding data group: data group switch, data group data clear

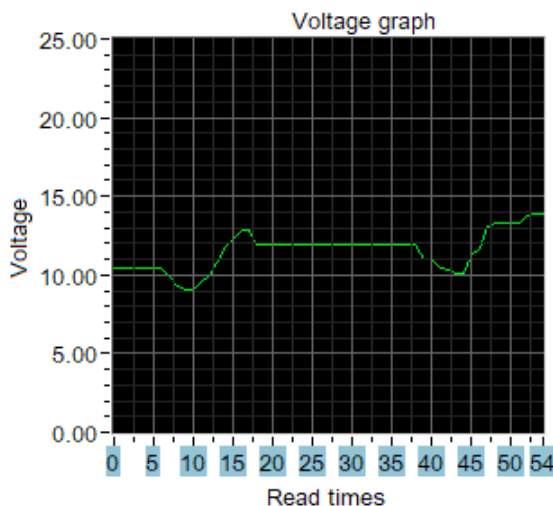
- 3: Corresponding the main display interface 1: main measurement interface
- 4: Corresponding the main display interface 3: Data recording interface
- 5: Corresponding the main display interface 2: Quick Charge Recognition interface
- 6: Corresponding the main display interface 7: Settings interface, dual format temperature display
- 7: Corresponding the main display interface 7: Settings interface, screen brightness, auto screen off time.
- 8: Corresponding the main display interface 6: Current Graphing Interface.
- 9: Corresponding the main display interface 5: Voltage Graphing Interface.

4.2 Graphing and Data Export:

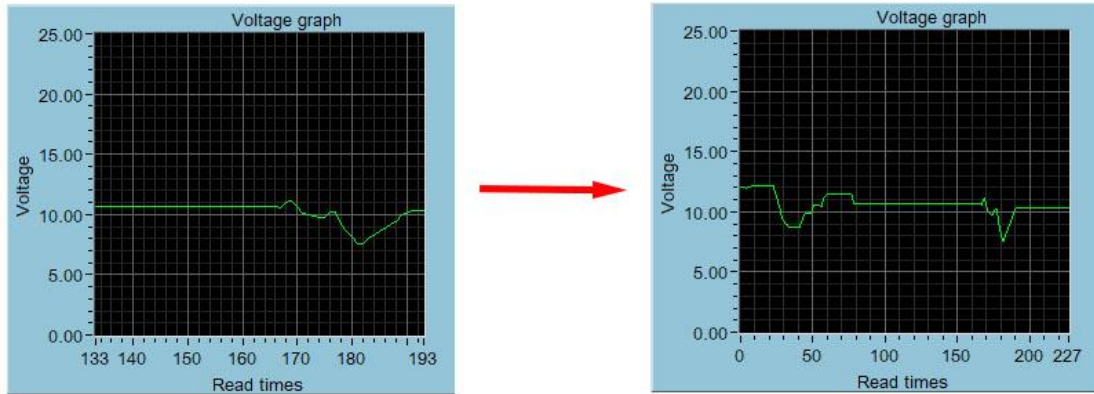
Move mouse over the Voltage / Time measurement graph then right-click and select the following options:



4.2.1: Copy data to the clipboard:



4.2.2: Automatically adjust the X axis:



4.2.3: Export data to the clipboard:

Format : Reference point number on X Axis, Voltage value at that reference point.

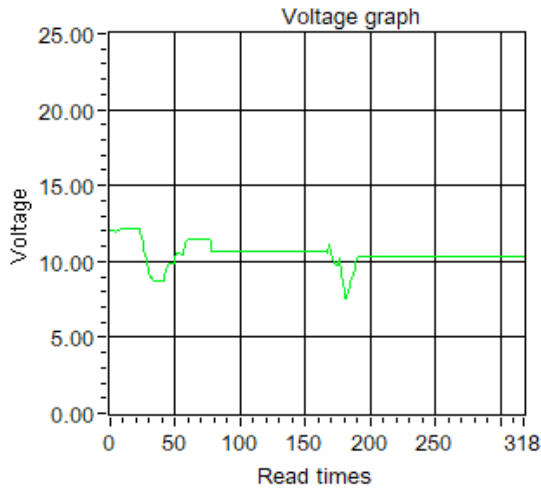
Read times	- Voltage graph	Voltage(V)	- Voltage graph
0	12.03		
1	12.02		
2	12.03		
3	12.03		
4	11.97		
5	12.00		
6	12.00		
7	12.08		
8	12.10		
9	12.13		
...			

4.2.4: Export data to Excel:

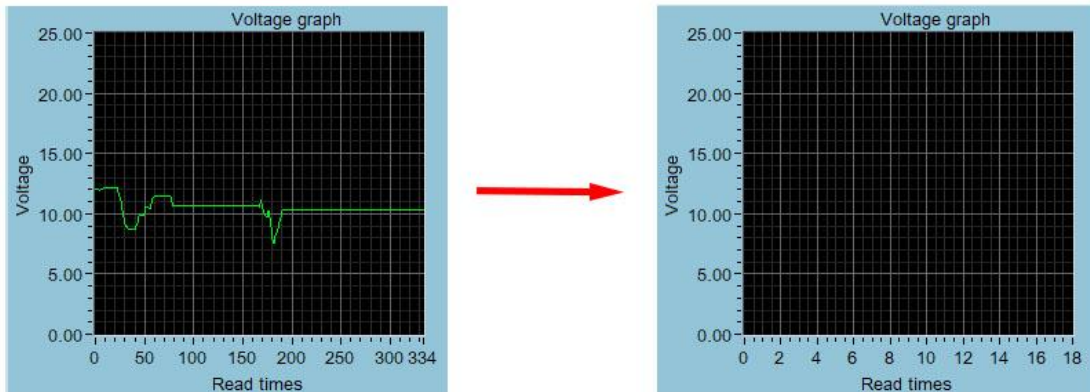
Export data to Excel. If you want export all data, remember to click auto scale X. otherwise only the current record data group is exported. Please note, **the exported data is only for Microsoft Office Excel.**

A1		Read times - Voltage graph								
	A	B	C	D	E	F	G	H	I	
1	Read times - Voltage graph	Voltage(V) - Voltage graph								
2		0	12.03							
3		1	12.02							
4		2	12.03							
5		3	12.03							
6		4	11.97							
7		5	12							
8		6	12							
9		7	12.08							
10		8	12.1							
11		9	12.13							
12		10	12.15							
13		11	12.15							
14		12	12.16							
15		13	12.17							
16		14	12.17							
17		15	12.18							
18		16	12.18							
19		17	12.18							

4.2.5: Export simplified images:



4.2.6: Clear chart:



Note:

1. for desktop, when you use the bluetooth adapter to make bluetooth connection, Please don't use the adapter own driver, and use the windows system bluetooth driver, otherwise the module can't make SSP series port communication. If you have installed the adaptor driver, you can uninstall it and unplug the adaptor, then plug in again, the system will install it automatically.
2. after power off, when power on again, you need to select the COM port again. When the bluetooth indicator is lighting, you can connect the PC with module
3. please use windows official version, simple version may lose some part.
4. when communicating, don't press the button on tester, otherwise there will be some error data
5. The exported data is only for Microsoft Office Excel.

UM24C Android APP Instruction

1, APP Installation:

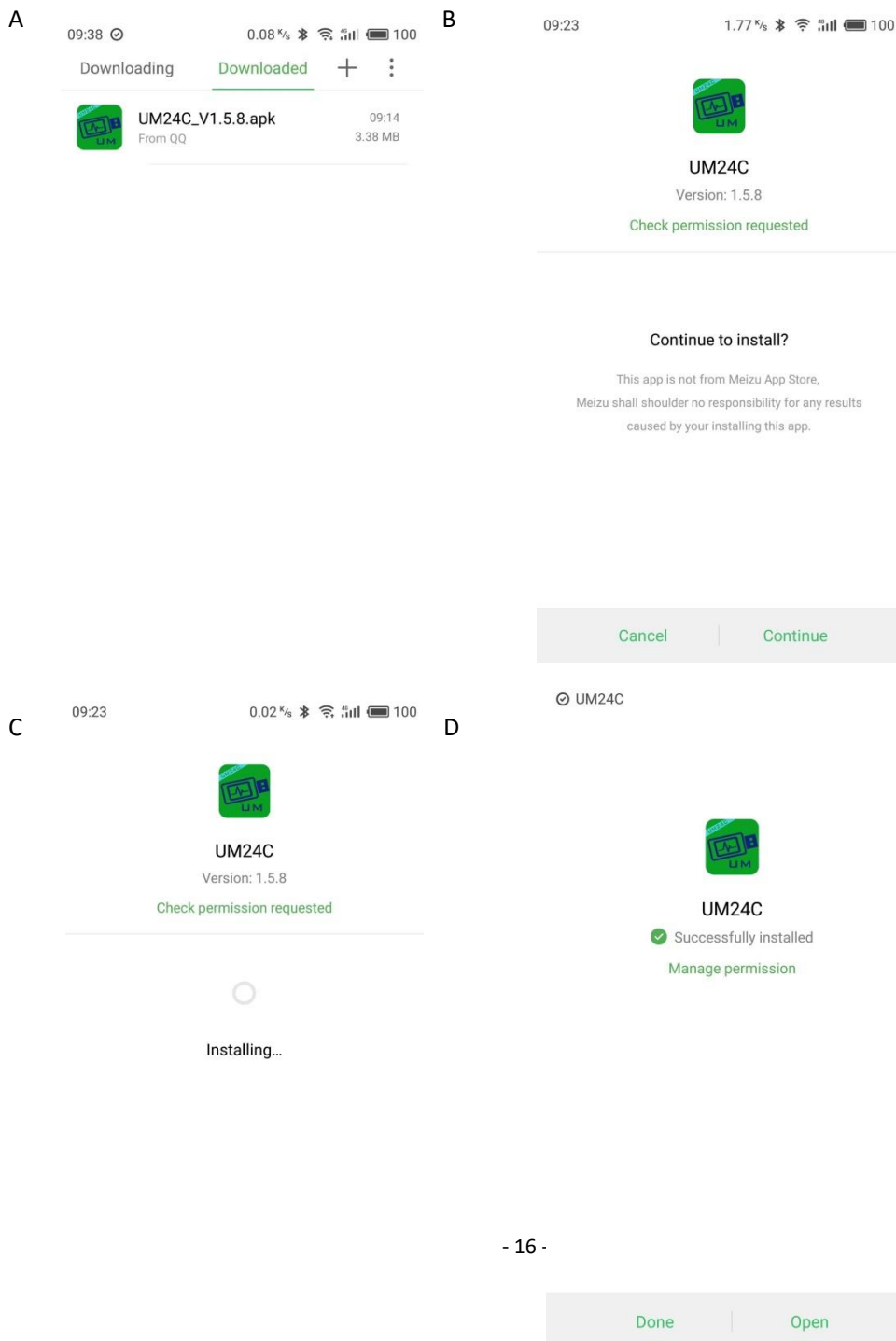
NOTE: The APP only support Android 5.0 and above.

UM24C Android APP download link:

<http://www.mediafire.com/folder/0jt6xx2cyn7jt/UM24>

1.1 APP download link : <http://www.mediafire.com/folder/0jt6xx2cyn7jt/UM24> , choose UM24C android APP file to download, you can use the computer to download , then sent the phone, or use the phone download directly.

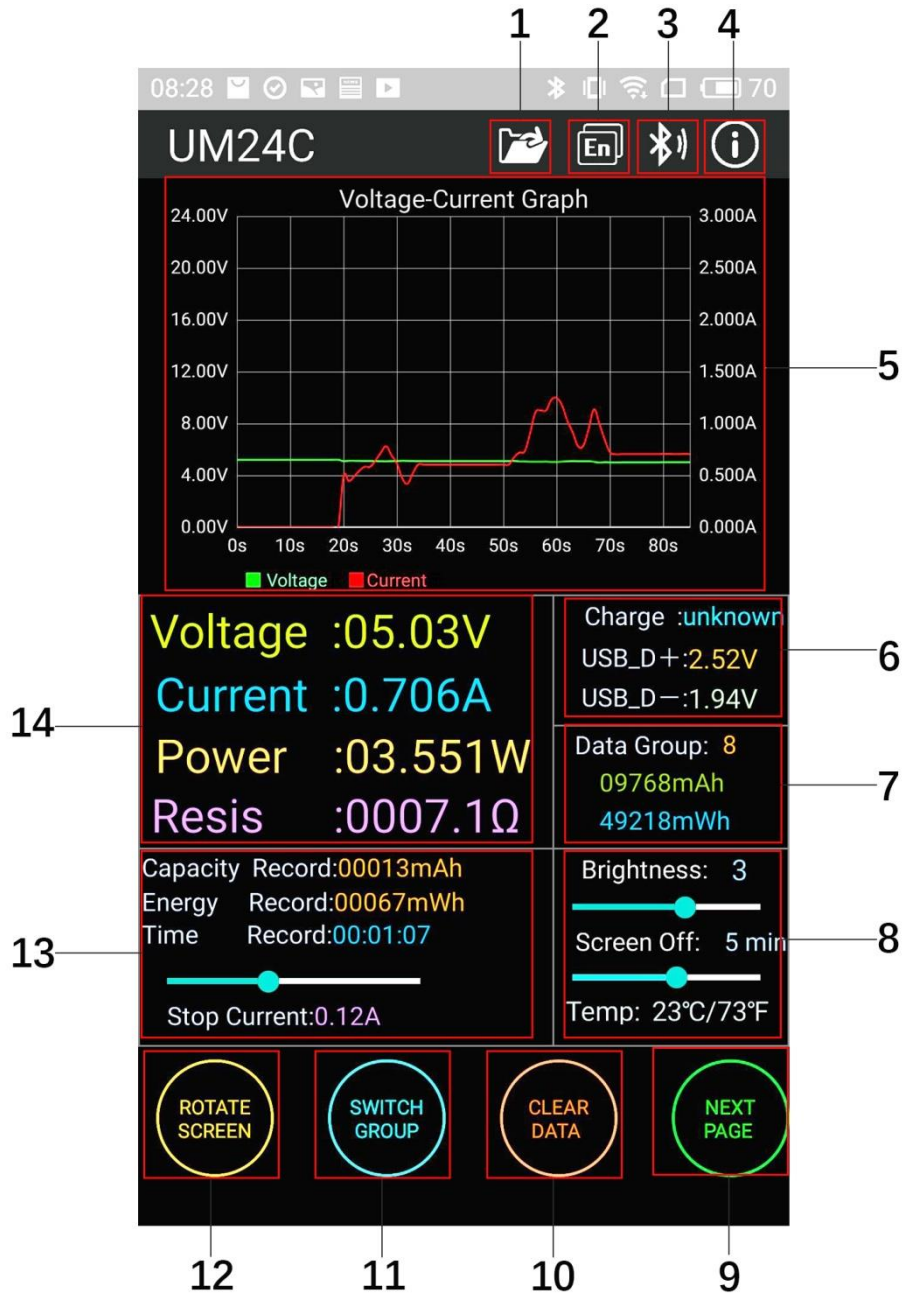
1.2 Open the installation package



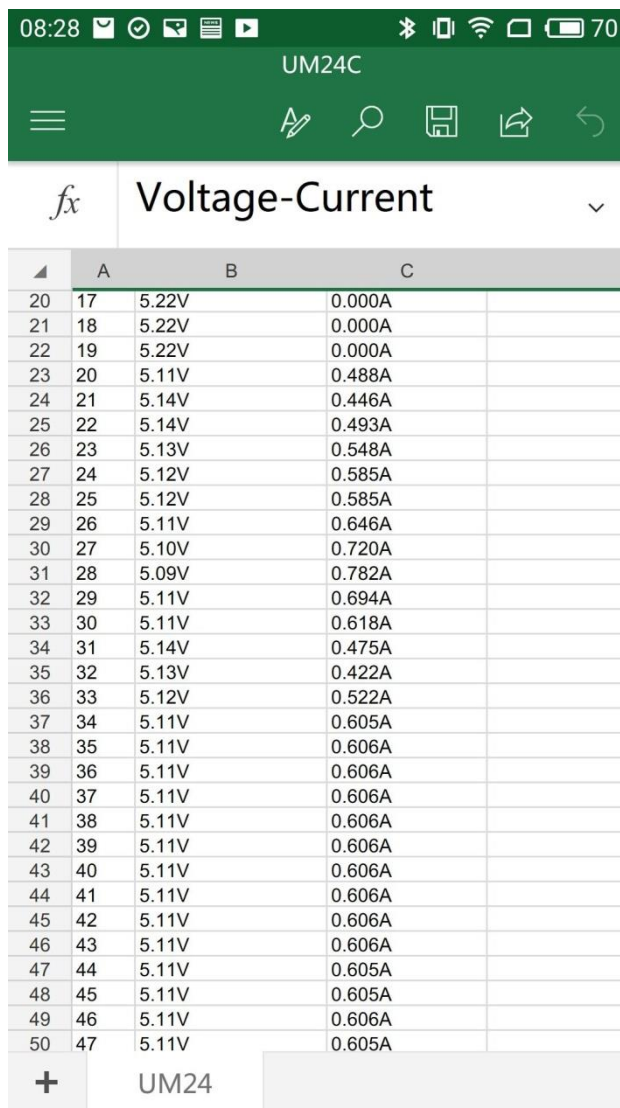
2. After Installation APP icon as the picture



2.1 Click APP icon, the interface as the following:



1: Export data to the mobile phone folder (phone SD card root director, repeat to write, generate graph directly in the excel.)



2: Multiple language choice, click this to select language. For now there are 17 kinds language

(简体中文 繁體中文 English русский Español Deutsch Français 日本語 한국어

हिन्दी ไทย Bahasa Indonesia Hollands Polski Slovenskýjazyk latviešu valoda

Türkçe), More languages continue to be updated.

3: Bluetooth connection: click this to select the device, search this device bluetooth name, select it and enter pair code (0000 or 1234), click connection (if you can't search UM24C bluetooth name, you can connect the bluetooth on the phone bluetooth, then open APP to connect directly)

4: Procedural information the version number, the assist personnel information

5: Voltage-current measurement dual graph

6: Corresponding the main display interface 3: accumulated mAh, accumulated mWh.

7: Corresponding the main display interface 2: quick charge recognition, D+ D- data signal wire

voltage

8: Corresponding the main display interface 7:

Screen brightness adjustment: press and hold the slider to adjust.

Off the screen time adjustment: press and hold the slider to adjust

Temperature display: Celsius/ Fahrenheit

9: Switch to next page

10: clearing key: clear current data group to zero

11: Switch data group: click data group to choose one of 0-9 total 10 groups

12: Rotation button: control USB tester display to rotate

13: Corresponding the main display interface 4, mAh and mWh display , time recording, control the slider to adjust the Low Current trigger value.

14 : Corresponding the main display interface 1, voltage measurement value, current measurement value, power measurement value, load equivalent load impedance

Note

A: Because there are too many kinds android phone, so the UI display interface will be different at some brand phone or different scale screen of one brand phone

B: Application access requirements, allowing the necessary permissions when installing (allows the background running, allows to use bluetooth, allowing folder operation, allowed to read the application list); and also set application permissions at phone after installation: allows the background running , allow to be not cleaned after screen locked, allow auto-start and so on

C: Languages selection memory, only at first time you need to select the language when open APP.