


 aveshare
RP2040-LoRa

RP2040

- | | |
|------|--------|
| CS | GPIO13 |
| CLK | GPIO14 |
| MOSI | GPIO15 |
| MISO | GPIO24 |
| RST | GPIO23 |
| BUSY | GPIO18 |
| DIO1 | GPIO16 |
| DIO4 | GPIO17 |

FLASH

- | | | | | | |
|-----------|---|-----|--------|---|-----------|
| OSPI_SS_N | 1 | CS | GPIO13 | 8 | 3V3 |
| OSPI_SD1 | 2 | DO | HOLD | 7 | OSPI_SD3 |
| OSPI_SD2 | 3 | WP | CLK | 6 | OSPI_SCLK |
| GND | 4 | GND | D1 | 5 | OSPI_SDO |
- W25Q16JVSSIQ

- P1**
- | | |
|----|----------------|
| 1 | GPIO0 |
| 2 | GPIO1 |
| 3 | GND |
| 4 | GPIO2 |
| 5 | GPIO3 |
| 6 | GPIO4 |
| 7 | GPIO5 |
| 8 | GND |
| 9 | GPIO6 |
| 10 | GPIO7 |
| 11 | GPIO8 |
| 12 | GPIO9 |
| 13 | GPIO10 |
| 14 | GPIO11 |
| 15 | GPIO12 |
| 16 | GPIO19 |
| 17 | GPIO20 |
| 18 | GPIO21 |
| 19 | GND |
| 20 | GPIO22 |
| 21 | RUN |
| 22 | R1 |
| 23 | R1 45R GPIO26 |
| 24 | R1 45R GPIO27 |
| 25 | GND |
| 26 | R13 45R GPIO28 |
| 27 | R17 45R GPIO29 |
| 28 | 3V3 |
| 29 | 3V3 EN |
| 30 | GND |
| 31 | VSYS |
| 32 | VBUS |
- Header 32

A

B

C

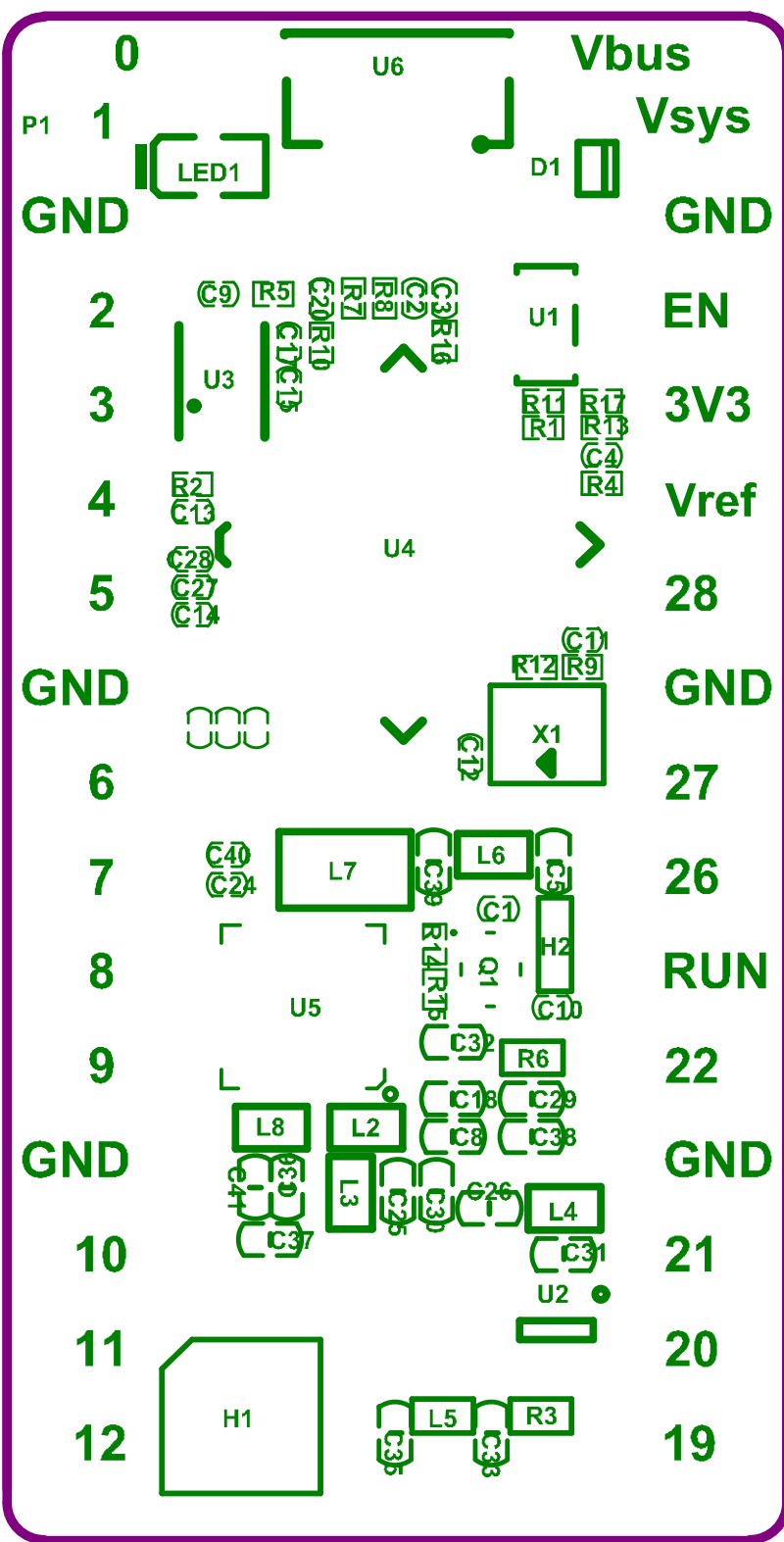
D

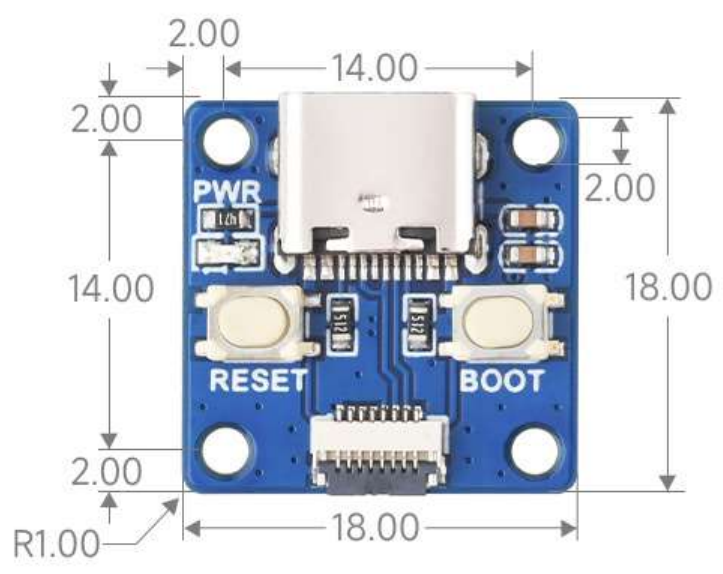
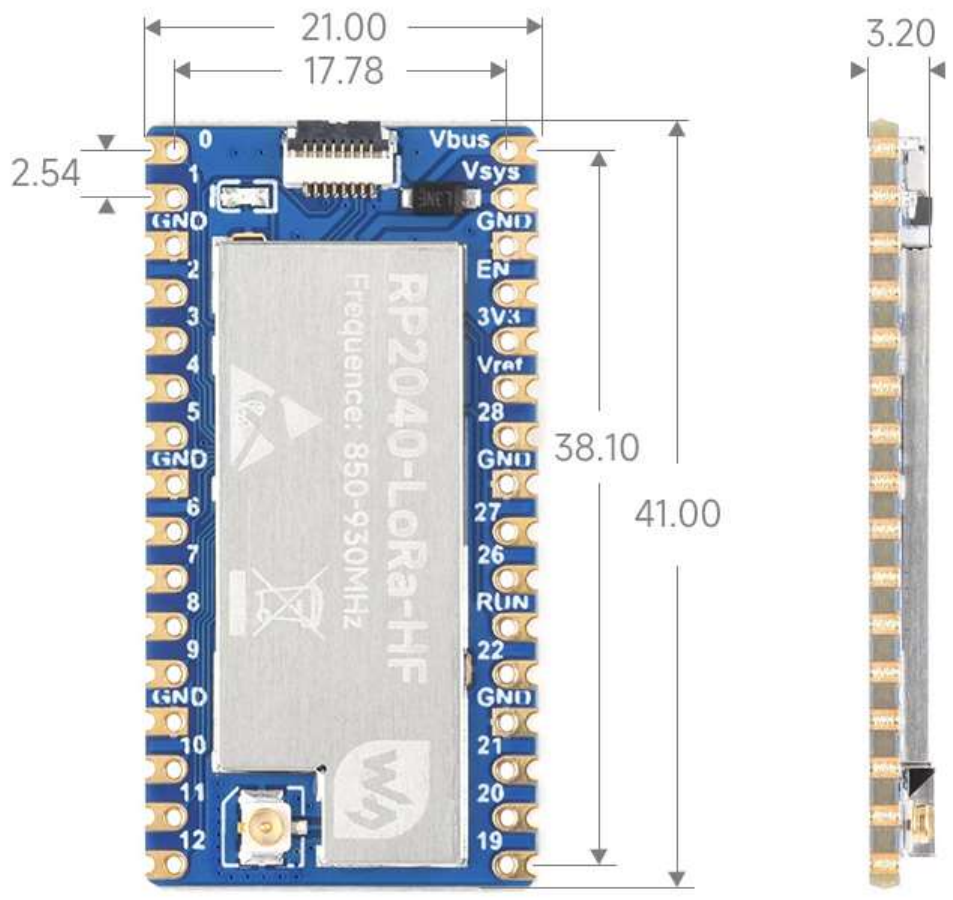
A

B

C

D





Unit:mm