

# CREALITY

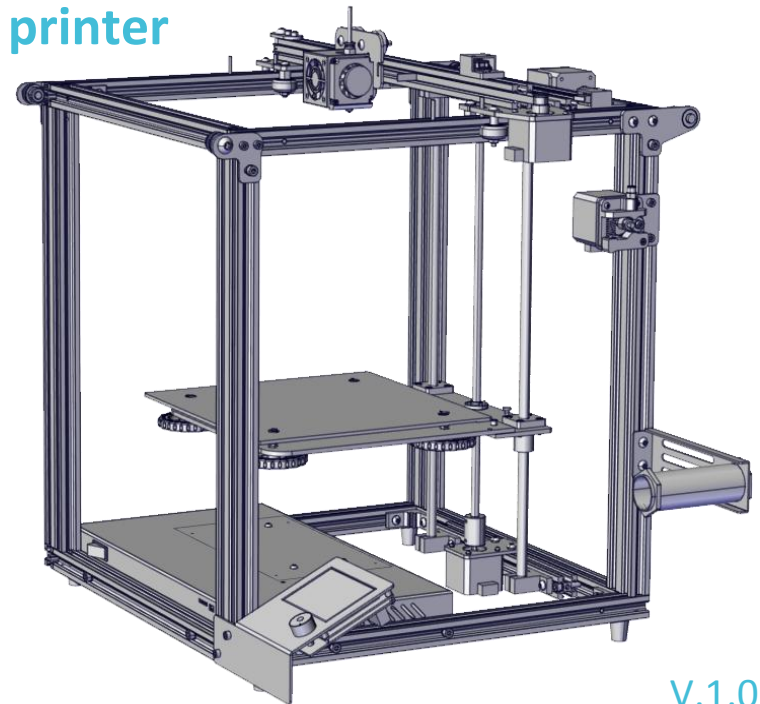
To be the Chief Evangelist

## Ender-5 Printer

### Guide Book

To make Top-quality 3D printer

- ◆ This guide book is for standard Ender-5.
- ◆ Please plug the power cord into a three-hole power jack.
- ◆ Detailed instructions for use are available on the TF card.



V.1.0

# Contents

1.	Introduction.....	1	6.	Loading Filament.....	11
2.	General List.....	2	7.	Bed Leveling.....	12
3.	Assembly.....	3	8.	Software Installation.....	13
4.	Cable Connection.....	8	9.	After-Sales Services.....	14
5.	Screen Information.....	10			

## Preface

### **Dear consumers,**

Thank you for choosing our products. For the best experience, please read the instructions before operating the Printer. Our 3D team will always be ready to give you the best service. Please contact us via the phone number or e-mail address provided at the end when you encounter any problem with the Printer.

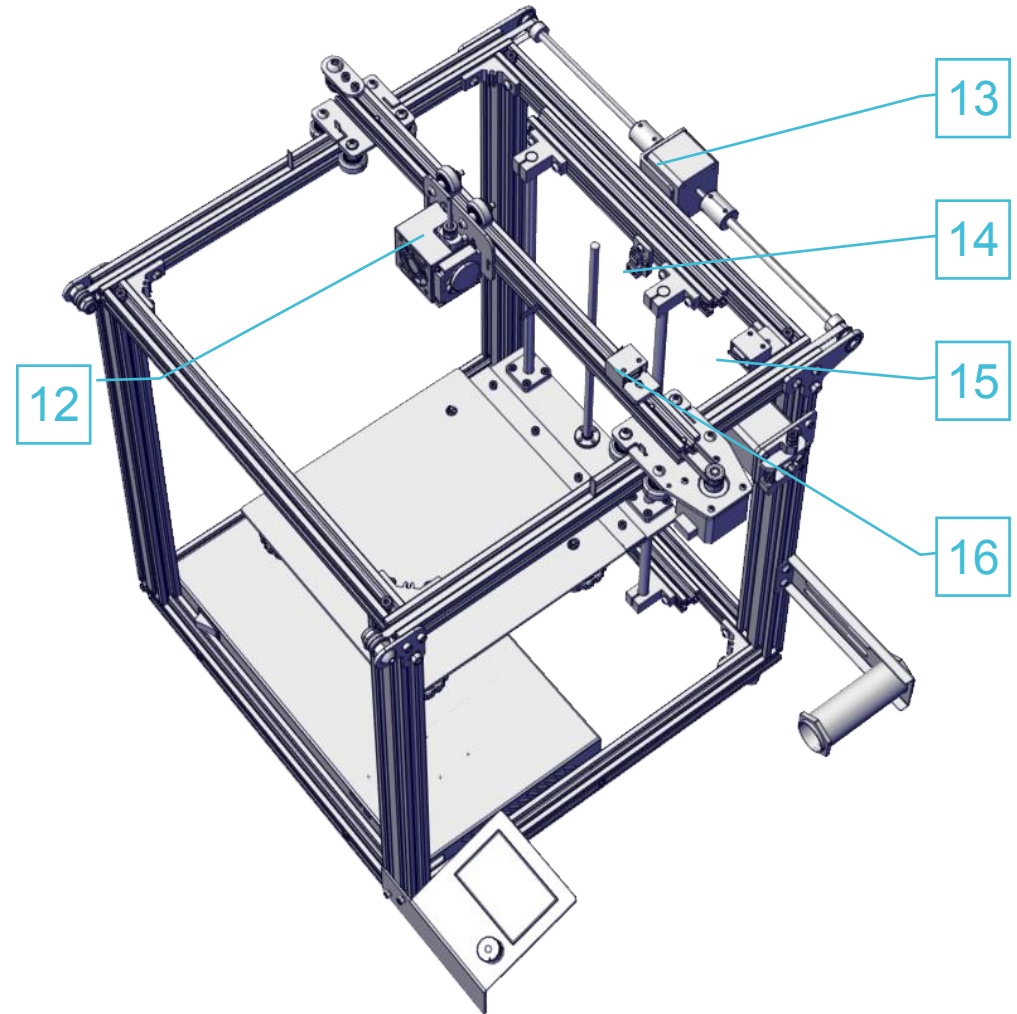
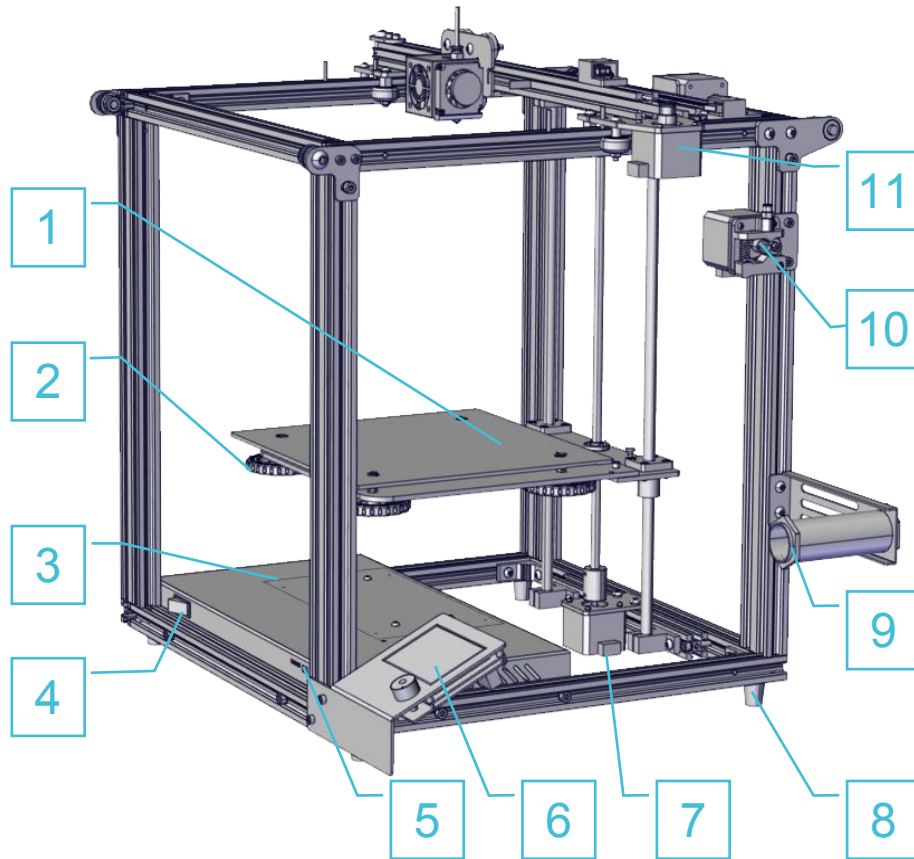
For a better experience in using our product, you may learn how to use the Printer in the following ways:

1. View the accompanied instructions and videos on the TF card.
2. Visit our official website at [www.creality3d.cn](http://www.creality3d.cn) You will find relevant software/hardware information, contact details and operation and maintenance instructions on the website.

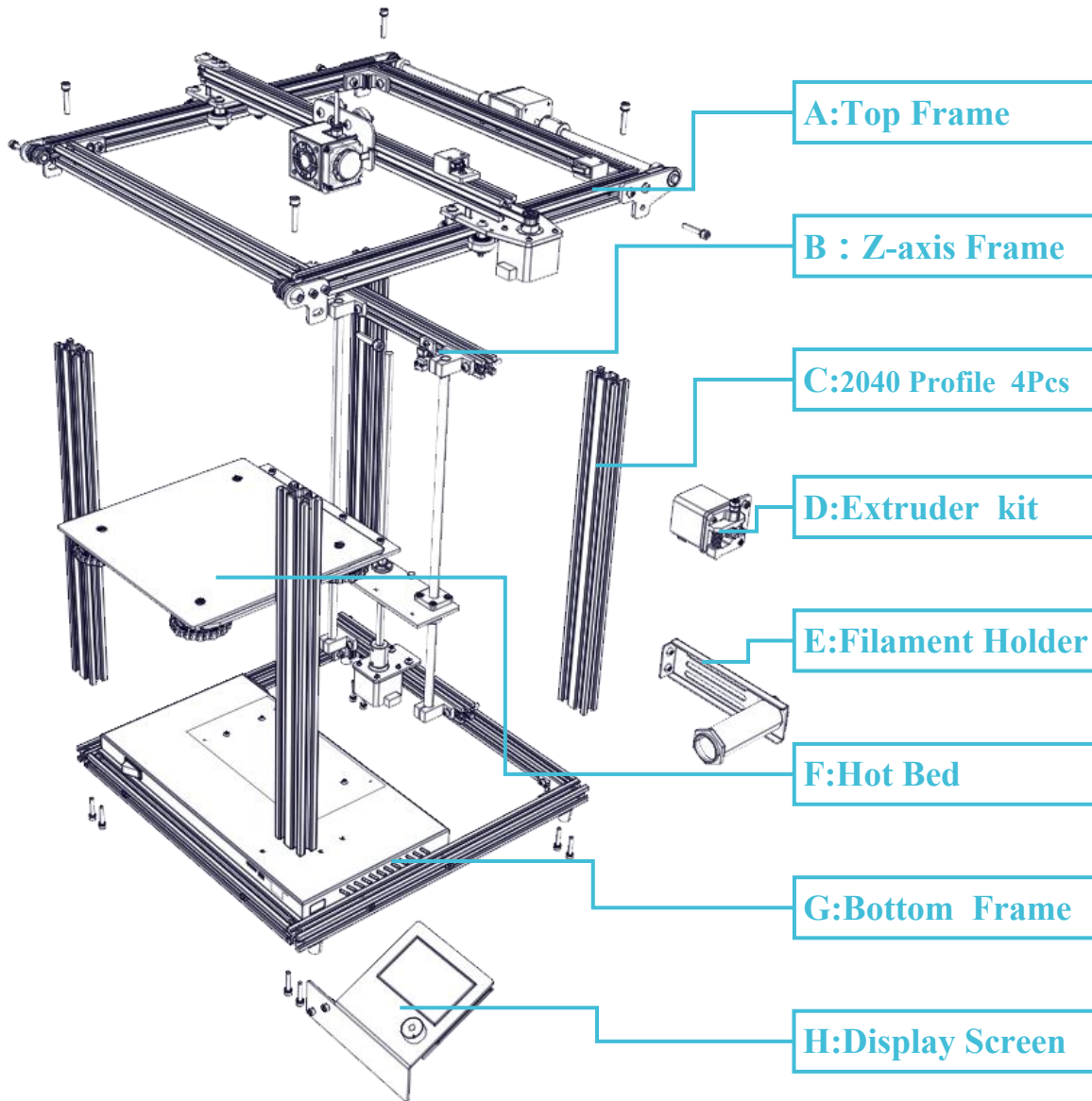
# Notes

1. Do not use the printer any way other than described herein in order to avoid personal injury or property damage.
2. Do not place the printer near any heat source or flammable or explosive objects. We suggest placing it in a well-ventilated, low-dust environment.
3. Do not expose the printer to violent vibration or any unstable environment, as this may cause poor print quality.
4. Before using experimental or exotic filaments, we suggest using standard filaments such as ABS or PLA to calibrate and test the machine.
5. Do not use any other power cable except the one supplied. Always use a grounded three-prong power outlet.
6. Do not touch the nozzle or printing surface during operation as they may be hot. Keep hands away from machine while in use to avoid burns or personal injury.
7. Do not wear gloves or loose clothing when operating the printer. Such cloths may become tangled in the printers moving parts leading to burns, possible bodily injury, or printer damage.
8. When cleaning debris from the printer hotend, always use the provided tools. Do not touch the nozzle directly when heated. This can cause personal injury.
9. Clean the printer frequently. Always turn the power off when cleaning, and wipe with a dry cloth to remove dust, adhered printing plastics or any other material off the frame, guide rails, or wheels . Use glass cleaner or isopropyl alcohol to clean the print surface before every print for consistent results.
10. Children under 10 years of age should not use the printer without supervision.

# 1. Introduction



## 2.General List



### Tool List

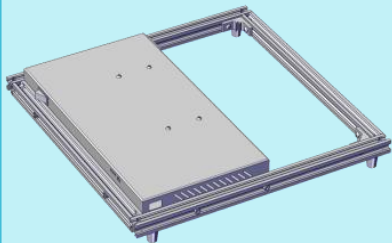
No.	Image	Name	Qty
1		Wrench & Screw driver	1set
2		TF Card & Reader	1set
3		Spatula	1
4		Pliers	1
5		0.4mm Nozzle Cleaner	1
6		Power Cable	1
7		USB Cable	1
8		PTEE Tube	1
9		Filament(200)g	1
10		Spare Parts	1set

### 3. Assembly Step (1)

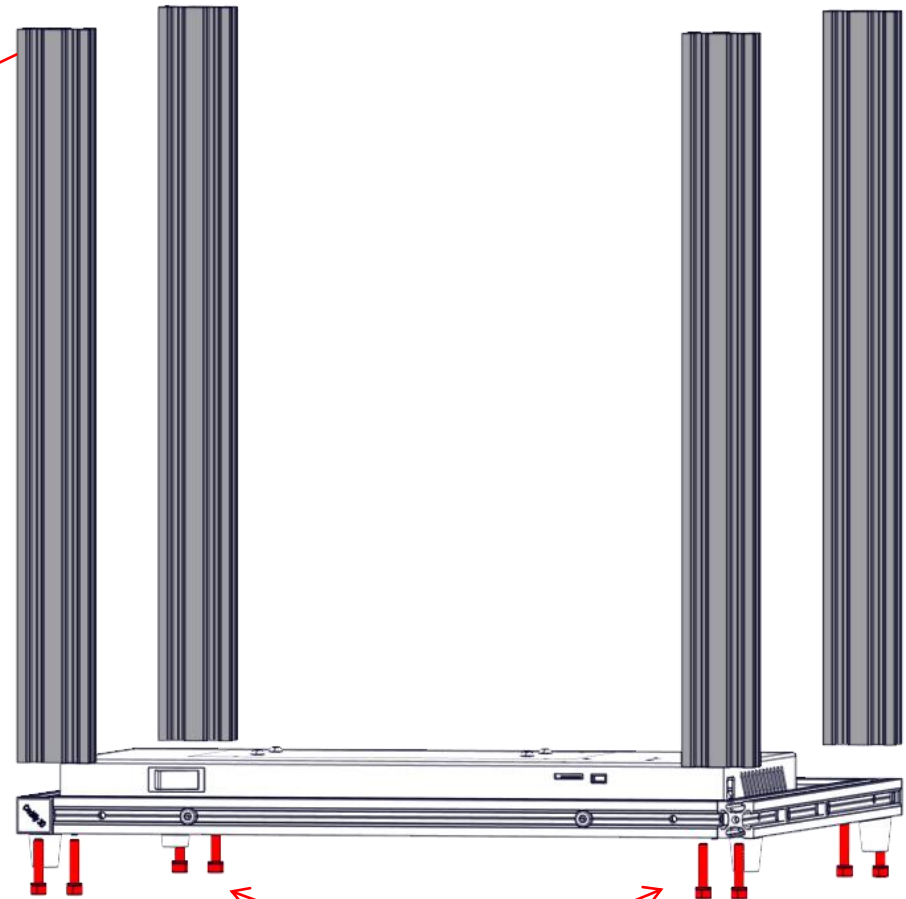
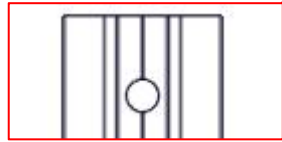


4pcs

2040 Profile



Bottom Frame

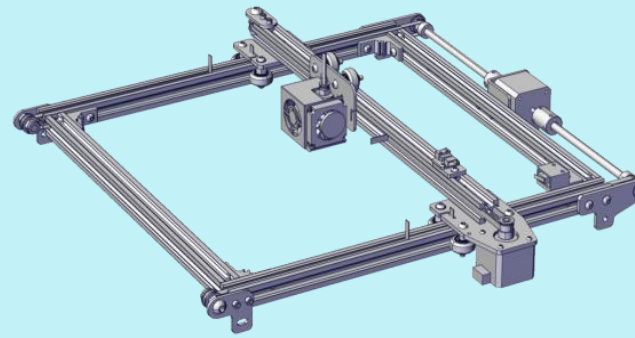


Place the profile hole of the side upon, install the profile, but not mess with the direction.





### 3. Assembly Step (2)

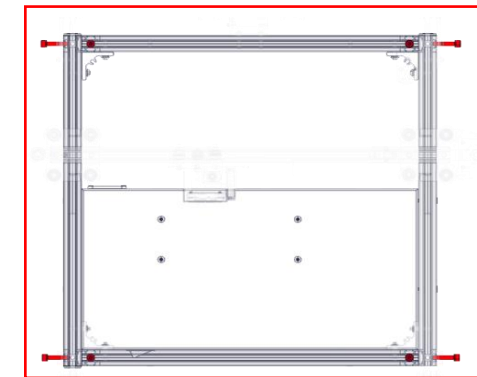
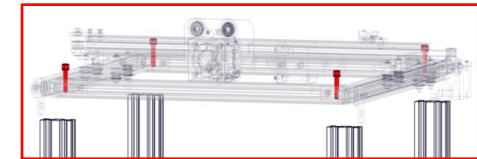
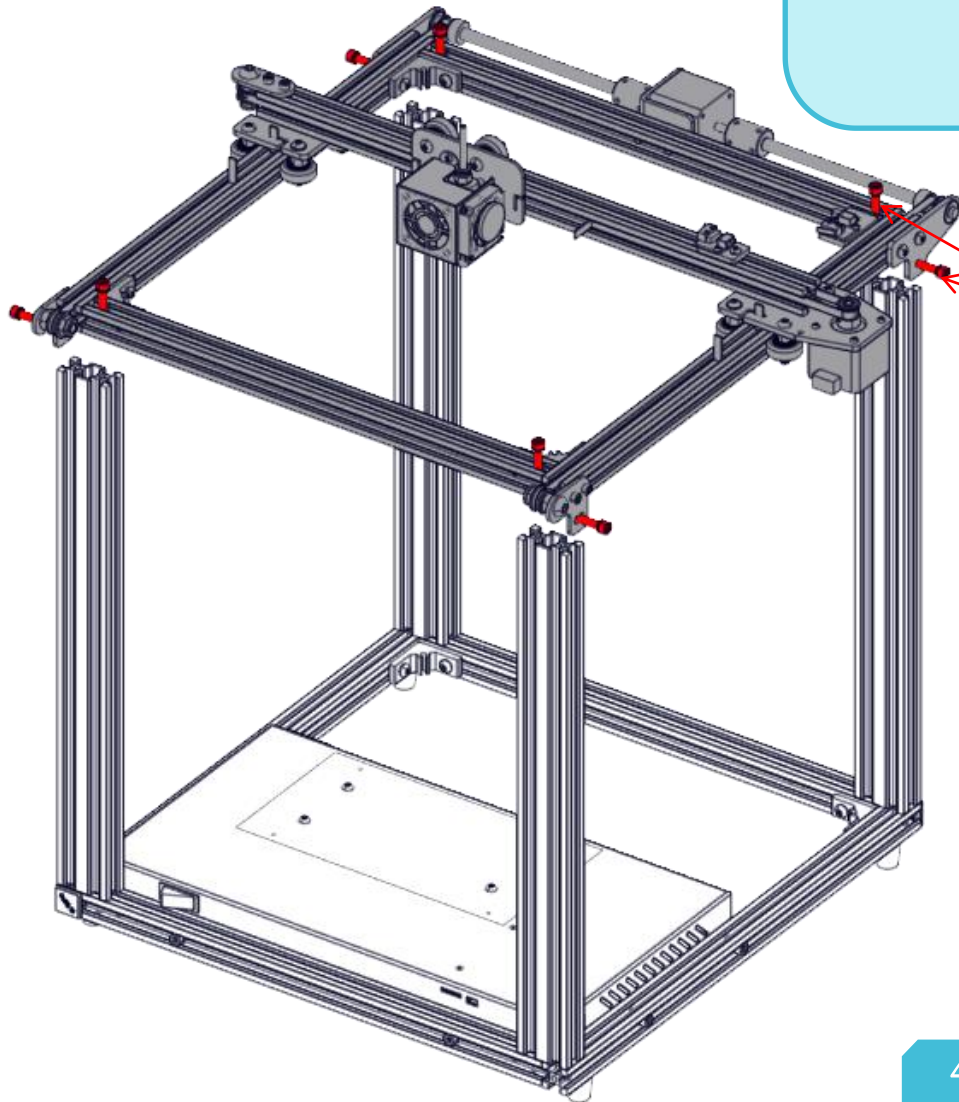


Top Frame

8pcs



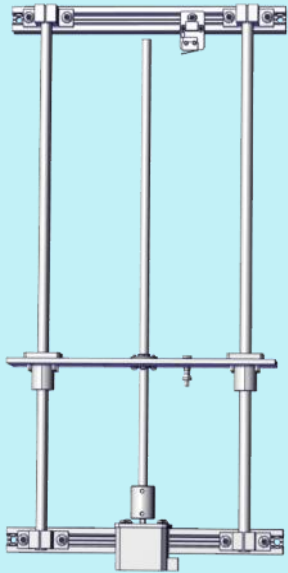
M5X25



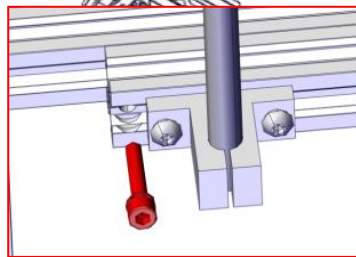
**i** Note: Tighten the four screws on the top, then tight the side screws.

### 3. Assembly Step (3)

M5X25 4pcs



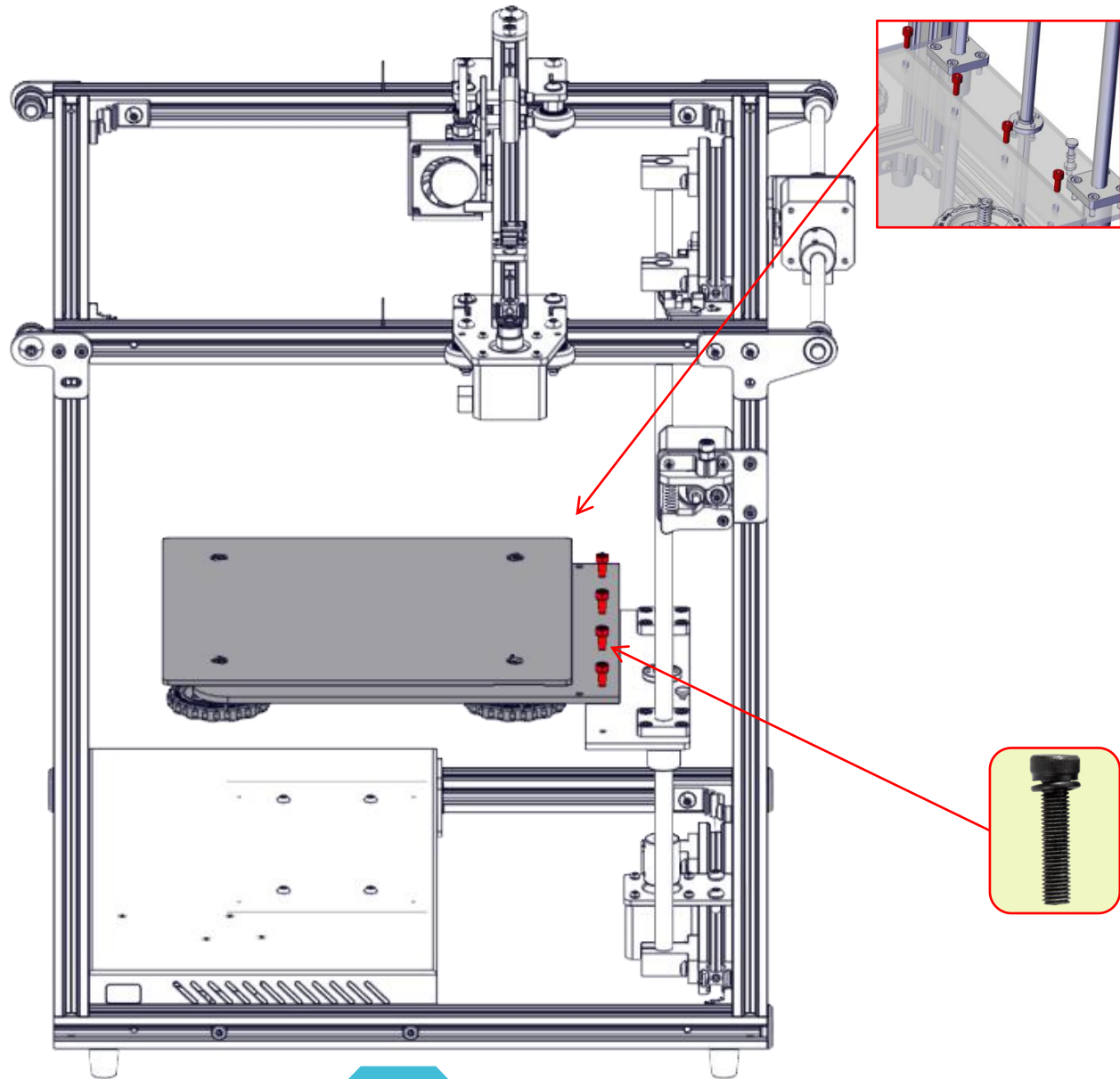
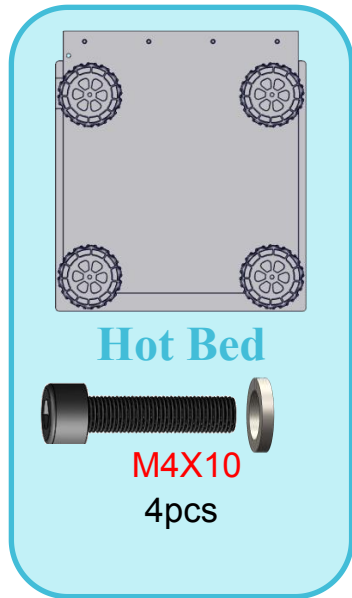
Z-axis Frame



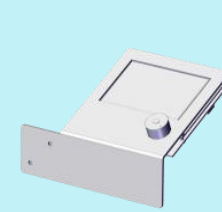
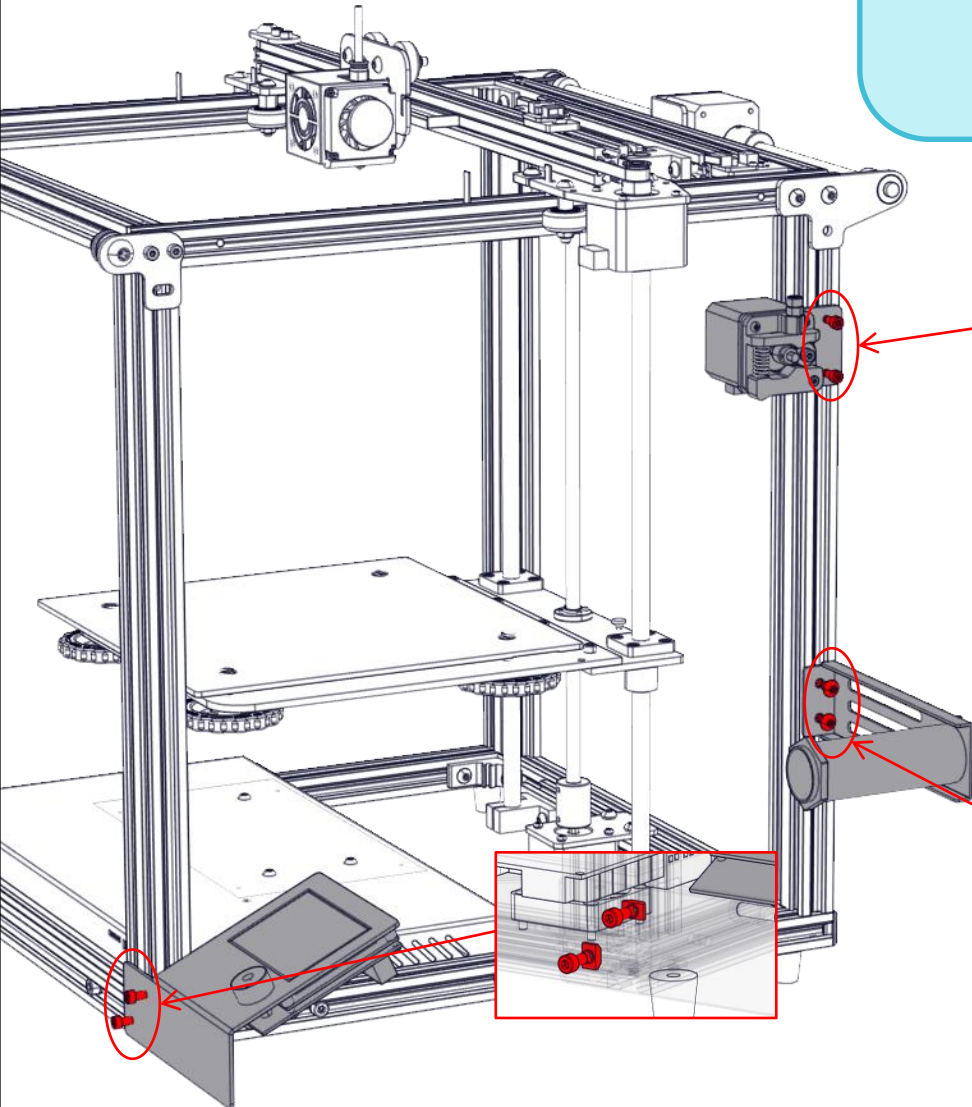
**i** Note: Align the bottom profile, then tighten the screws.



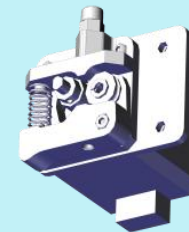
### 3. Assembly Step (4)



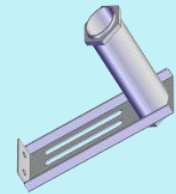
### 3. Assembly Step (5)



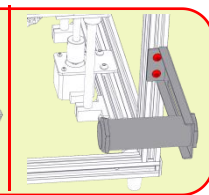
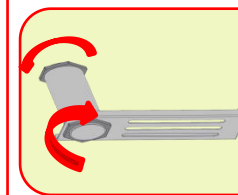
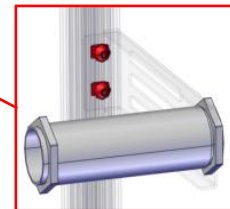
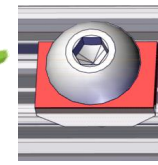
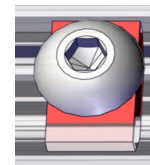
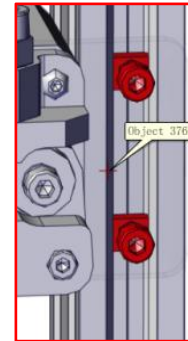
M4X8 M4 T-nut  
2pcs



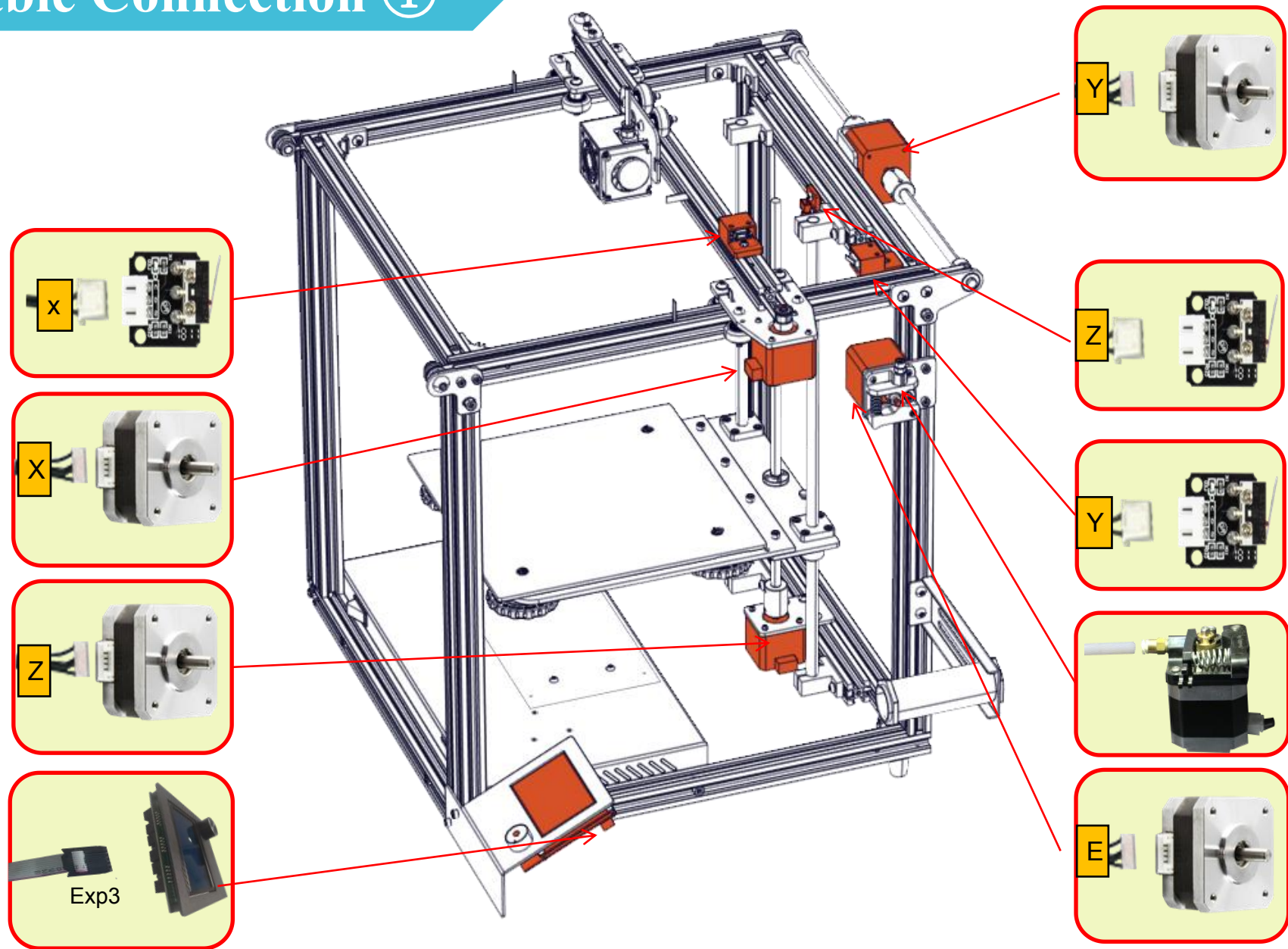
M4X8 M4 T-nut  
2pcs



M5X6 M5 T-nut  
2pcs

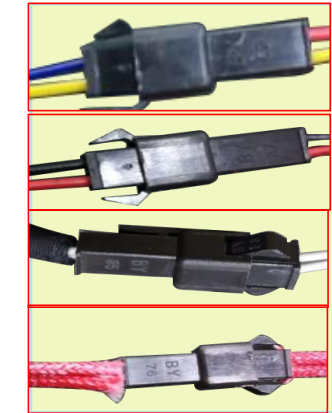


# 4. Cable Connection ①

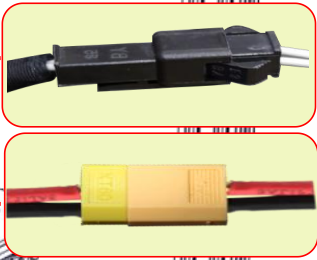
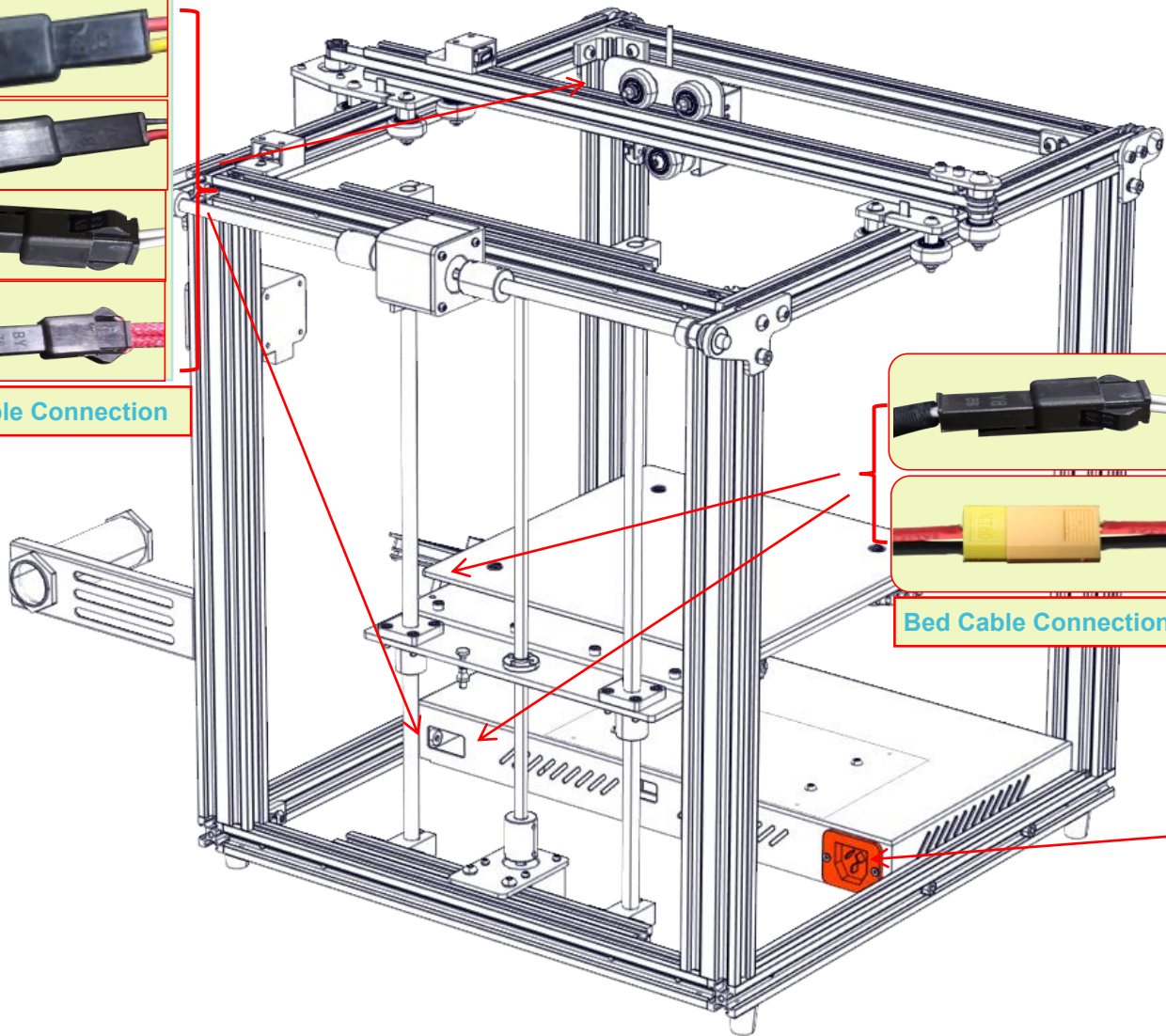




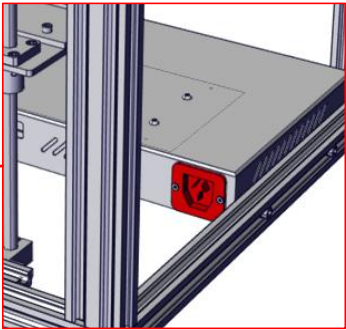
# 4. Cable Connection ②



Nozzle Cable Connection



Bed Cable Connection



\*Plug the power cord into a three-hole power jack.

# 5. Screen Information

## Information Displayed

The diagram shows the LCD screen of a 3D printer with the following information displayed:

- Model:** Ender-5
- Print Speed:** 100%
- Set Temperature of the Nozzle:** 0°
- Current Temperature of the Nozzle:** 29°
- Set Temperature of the Hot Bed:** 0°
- Current Temperature of the Hot Bed:** 30°
- Part Cooling Fan Speed:** 1%
- Current Location of the nozzle:** X:000.0 Y:000.0 Z:+000.0
- Print Time:** --:--
- Print Progress:** --:--
- Prompt Message:** www.creality3d.cn

**Navigation:**  
 Push: OK/Enter Sub Menu  
 Turn: Change Option/Value

## Screen Options

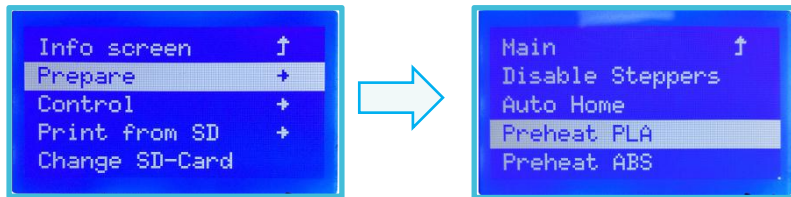
Menu	Sub Menu	Explanation
↑ Info Screen ↑	↑ main ↑	Return
Prepare→	Disable Steppers	Moving X Y Z axis by your hands
	Auto Home	return to the origin
	Preheat PLA	
	Preheat ABS	
	Cooldown	Close and cooldown the nozzle
	Move Axis→	Moving X Y Z axis or Extruder by given value.
Control→	Temperature→	Heat the nozzle and the bed or change fan speed by given value
	Restore Failsafe	Restore factory setting
No card /Print from SD	Select the printing model	
Init. SD-Card /Change SD-Card		
Pringting		
Tune→	Speed	Change Printing Speed by given value
	Nozzle	Change the temperature by given value
	Bed	Change the temperature by given value
	Fan Speed	Change Fan Speed by given value
	Flow	Change filament flow by given value
Pause Print		
Stop Print		



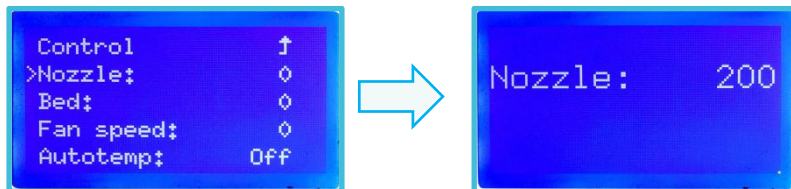
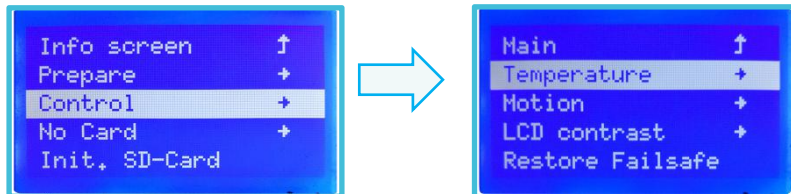
# 6. Loading Filament

## 1. Preheat

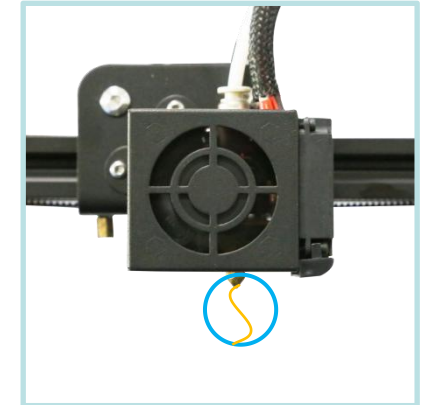
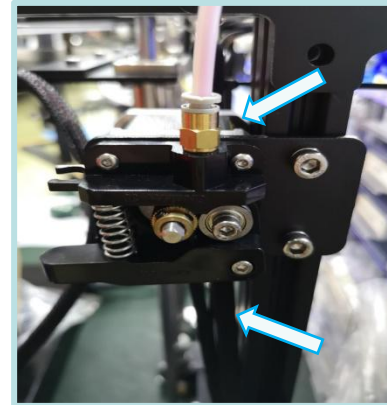
### Method 1



### Method 2



## 2. Feeding

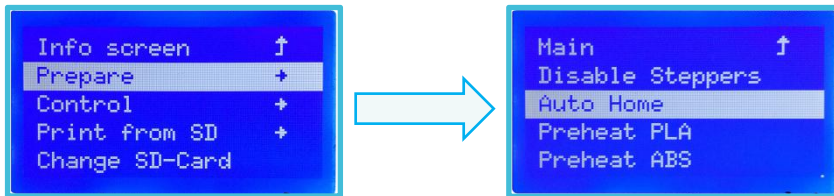


Press and hold the extruder lever then insert 1.75mm filament through the small hole of the extruder. Continue feeding until you see filament come out the nozzle.

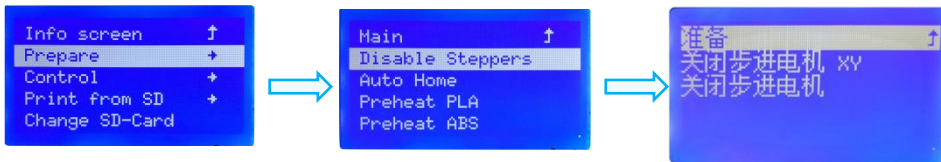
### Tip: How to Replace the Filament?

- 1、Cutting filament near the Extruder and slowly feed new filament until they are fed into the new filament.
- 2、Preheating the nozzle and withdraw the filament quickly and feed the new filament.

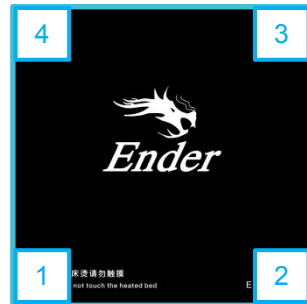
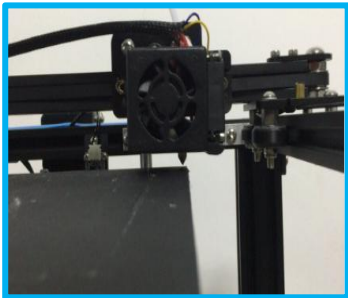
# 7. Bed Leveling



1. Prepare → Auto Home. Wait for the nozzle to move to the left/front of the platform.

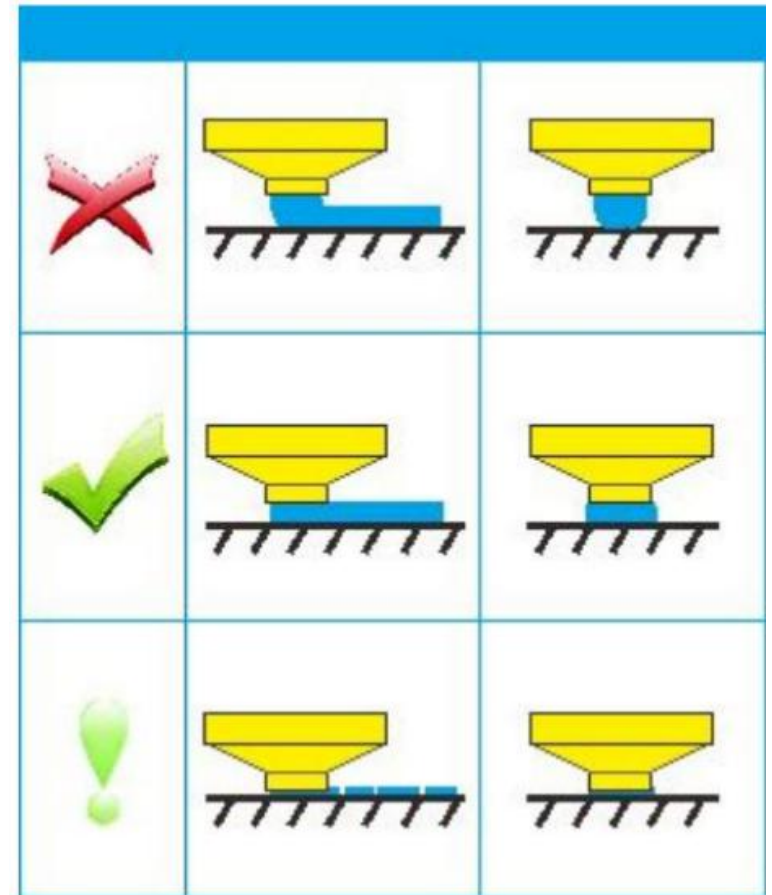


2. Prepare → Disable Steppers (Close stepper drive, release motor)



3. Move the nozzle the front/left leveling screw and adjust the platform height by turning the knob underneath. Use a piece of A4 paper (standard printer paper) to assist with the adjustment, making sure that the nozzle lightly scratches the paper.

4. Complete the adjustment of the screw on all 4 corners.  
5. Repeat above steps 1-2 times if necessary.



## 8. Software Installation



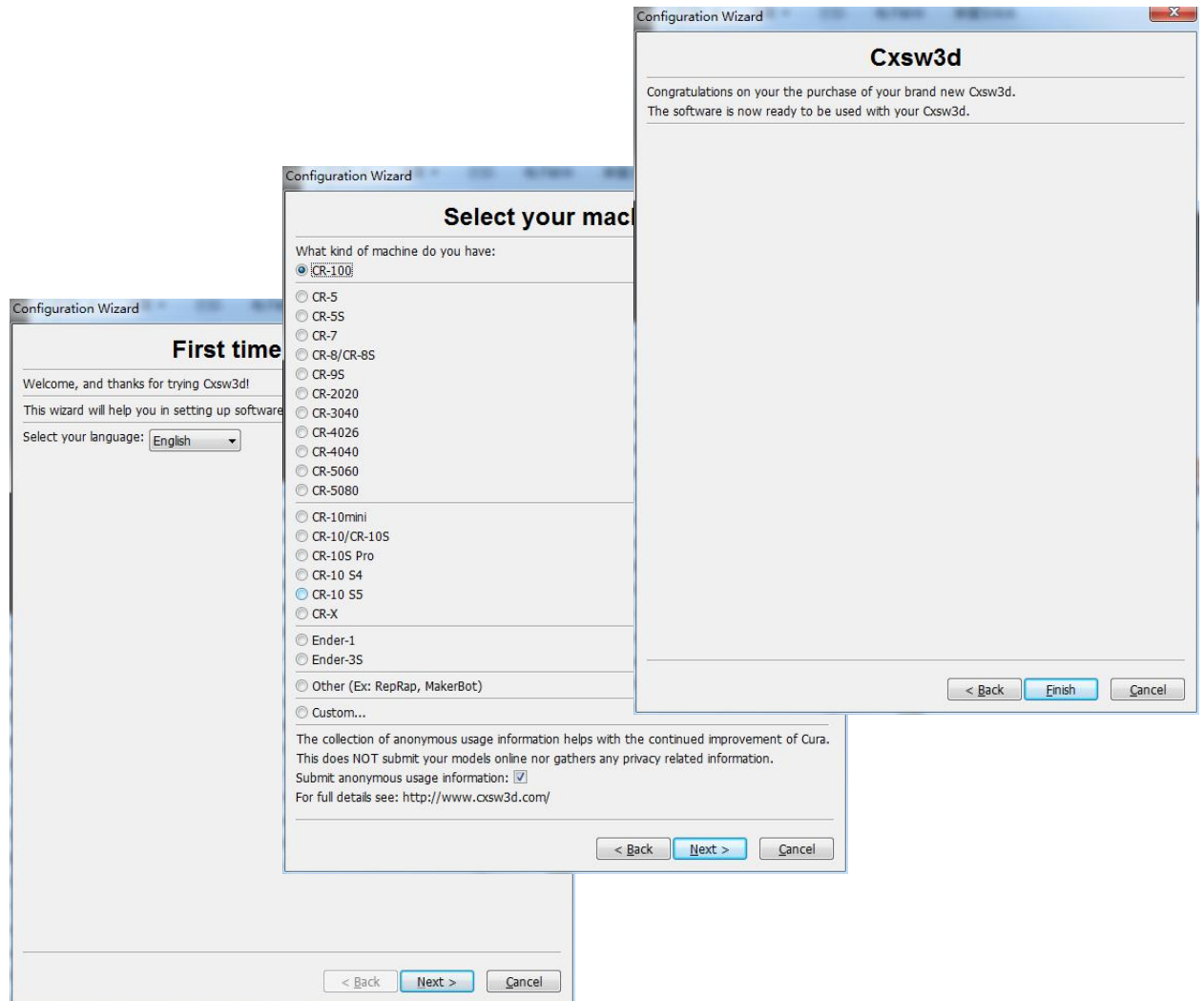
Creality  
Slicer\_1.2.1.msi

1. Double click to install the software.



Creality Slicer

2. Double click to open the software.

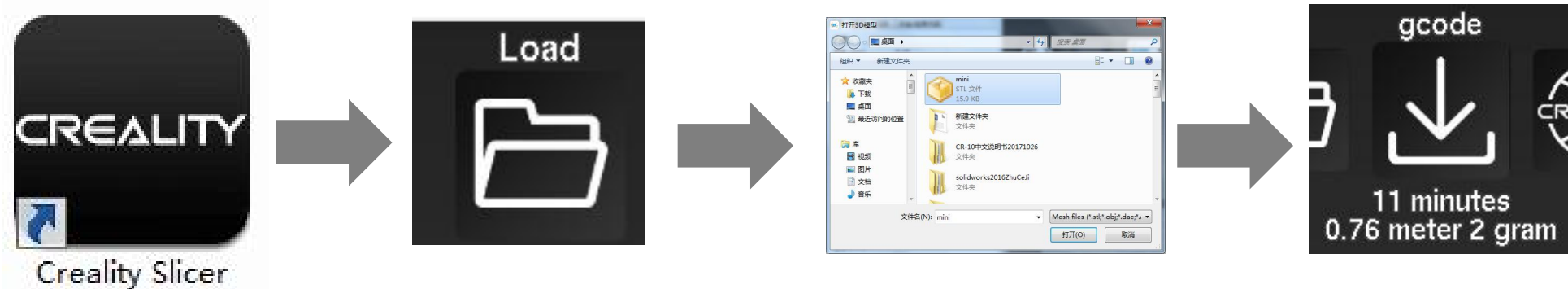


3. Select language→Next→Select your machine→Next→Finish.

# 9. Preparing to Print

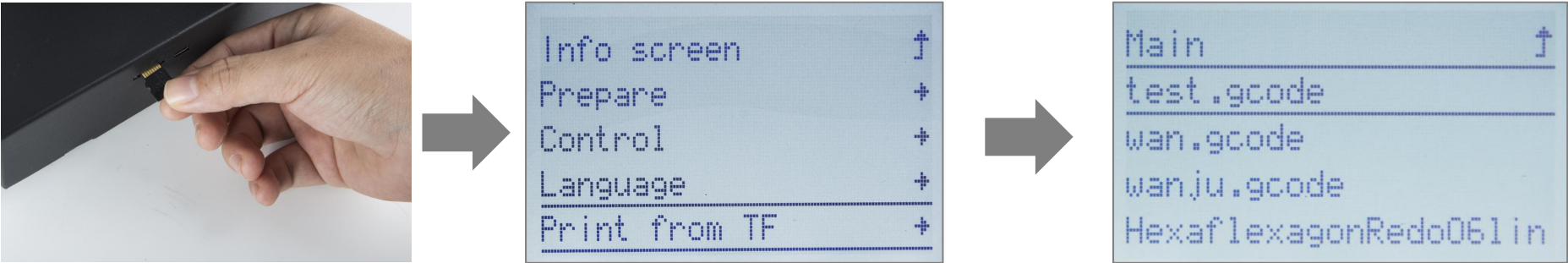
## 1.Slicing

Insert TF card into computer with Reader.



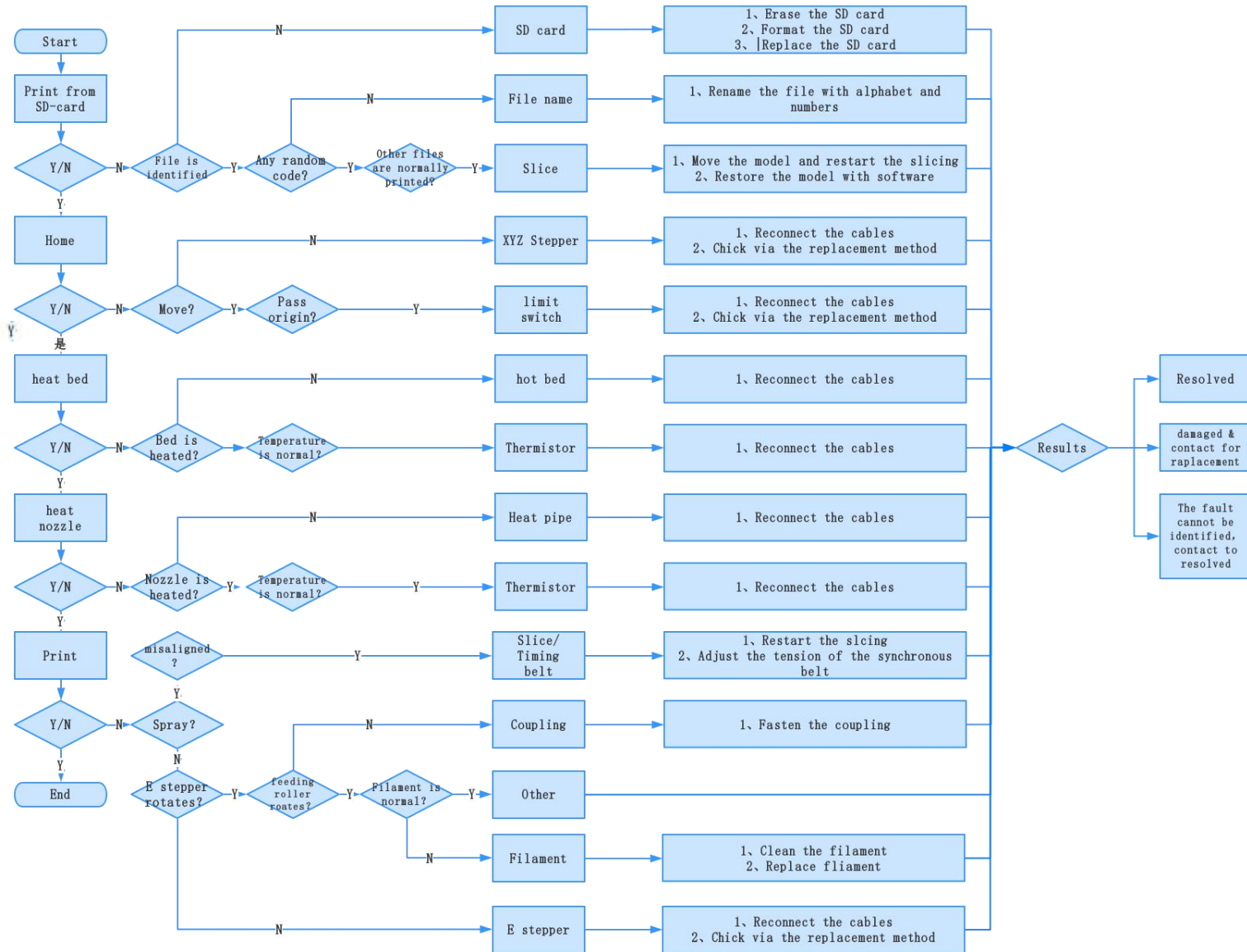
Open the software→Load→Select the file→Wait for slicing to finish ,and save the gcode file to TF card.

## 2.Printing



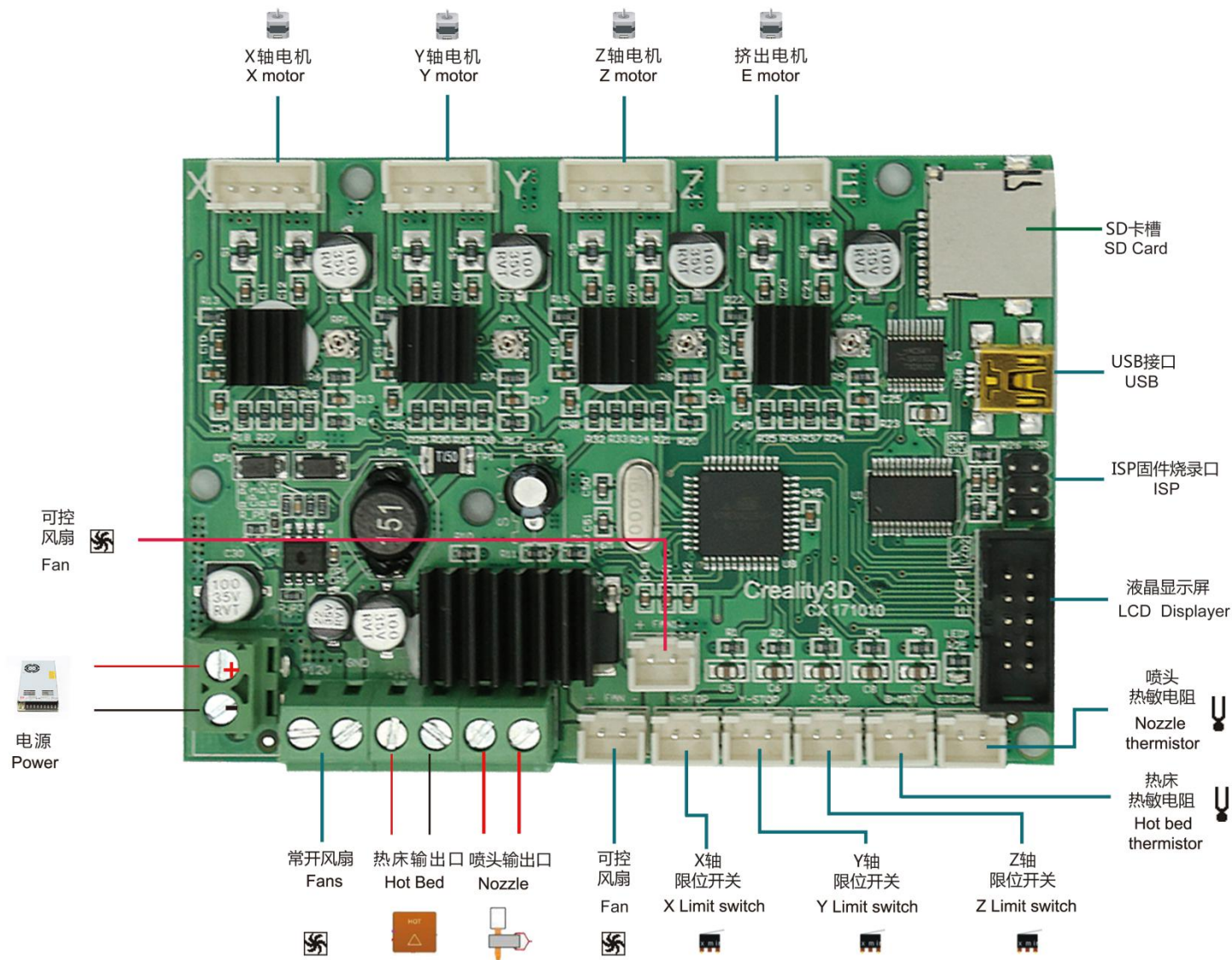
Insert the TF card→Select Print from TF →Select the file.

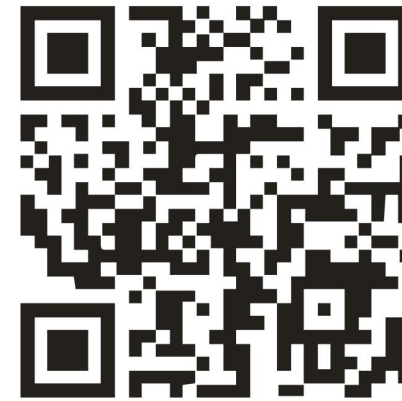
# 10. Troubleshooting





# 11. Circuit Wiring Diagram





Facebook QR code



## SHENZHEN CREALITY 3D TECHNOLOGY CO., LTD.

12/F, Block 3, JinChengYuan, Huafan Road, Tongsheng Community, Dalang, Longhua District, Shenzhen, China, 518109

Official Website: [www.creality3d.cn](http://www.creality3d.cn)

Tel: +86 755-2105 9455

E-mail: [info@creality3d.cn](mailto:info@creality3d.cn) [cs@creality3d.cn](mailto:cs@creality3d.cn)