

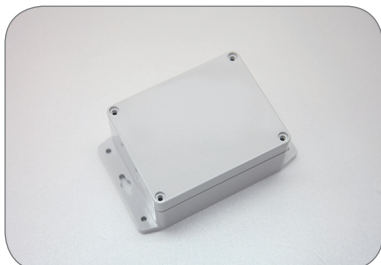
G2XXMF-IP67 / G3XXMF-IP67 SERIES

SEALED IP67 POLYCARBONATE AND ABS ENCLOSURES WITH MOUNTING FLANGE

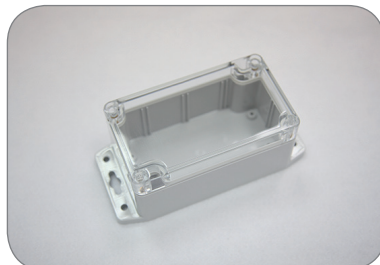


PRODUCT INFORMATION

- The lid and base incorporate a tongue and groove sealing system with silicone adhesive.
- Wall mounting holes and lid fixing screws are outside the sealing area thus preventing the ingress of moisture and dust.
- Design to IP67 of IEC 529 (Dust and Hoseproof).
- Bosses on internal base allow fixing of PCB's horizontally or connection of terminals with M3X4mm self-tapping screws.
- Internal guide slots for mounting PCB assemblies vertically.
- Available with clear or light grey lids.



G212MF-IP67



G205CMF-IP67



G362MF-IP67