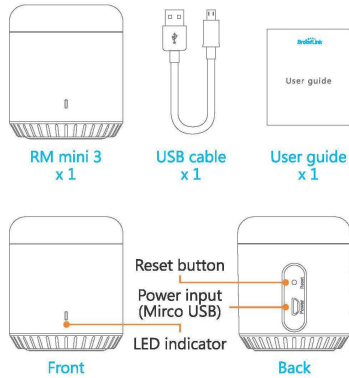
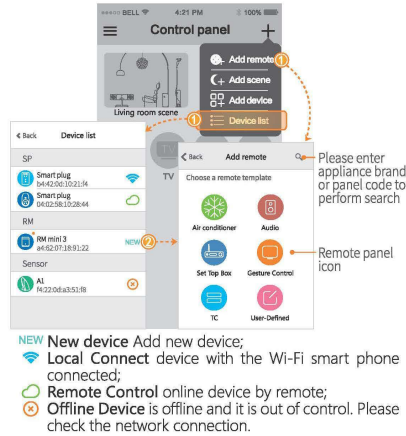


Package Content

After opening package, please check contents as below



Add Device



Instruction of LED indicator

- Blue indicator flashes quickly:** Waiting for configuration (device is under factory state or reset). Under this circumstance, you can tap 'Add device' in APP and it guides you to finish the configuration.
- Blue indicator flashes slowly:** Network is down, power supply is down and then recovers, or during the configuration process.
- White indicator flashes once:** Transmitting infrared signal (it occurs when learning the infrared codes or controlling appliance).
- Note:**
 - Do not use non-ASCII characters in Wi-Fi name or password. It may cause configuration failure. The device supports Wi-Fi of 2.4G 802.11 b/g/n only.
 - Please place the device on open place. Please point remote to the top of the device during learning and we suggest the distance is less than 1m.
 - Please configure the device according to the user guide. If you encounter problems, please contact our authorized distributors or our support team.
 - All the technical details are subjected to the actual product performance.

Hangzhou Gubei Electronics Technology Co., Ltd.

Address: Room 106, No.611 Jianghong Road, Binjiang District, Hangzhou, Zhejiang, China(310052)

RM mini 3
Universal Remote
User Guide



Facebook



Twitter



LinkedIn

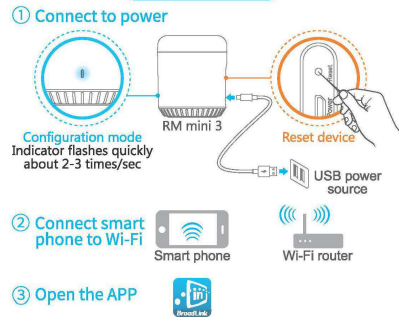
Hotline
400 0900 955

Website: www.ibroadlink.com
Service: support@ibroadlink.com

Step 1 Install APP

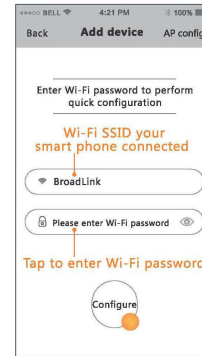


Step 2 User Guide



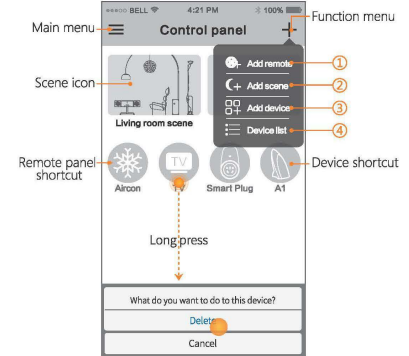
- Connect to power and set RM mini 3 to config mode (indicator flashes quickly).
- Please choose the proper adapter which output power is 5V DC and $\geq 500\text{mA}$ for RM mini 3.
- Please place the device on open place. Please point the remote to the top of the device during learning, and we suggest the distance from the device to remote should be less than 1m.

Step 3 Add device



- If configuration failed, please reset the device and re-configure.
- Reset device:** Long press on reset button with a slim needle for more than 5s until the indicator flashes quickly.

Step 4 Control panel



- Tap to add remote control panel;
- Tap to add scene;
- Tap to add device;
- Tap to view added devices.